

Seoul Traditional Market

Tourist Guide



Go on a market tour around every corner of Seoul

Seoul's special taste and style, just for you.

Journey along the tasty trail to enrich your senses.

We are pleased to introduce to you 25 traditional markets spread across every corner of Seoul.

From the smallest detail about each market

to various attractions, foods, and popular tour sites nearby.

This booklet contains all the essential information needed about

The traditional markets of Seoul.

If you want to take a peek at how the people of Seoul spend their days in the spring, summer, fall, and winter.

How about going on a tour around the traditional markets of Seoul that are safe to visit right now.

Your visits to these traditional markets will enliven the local markets and the good-hearted people of the market will warm your heart.

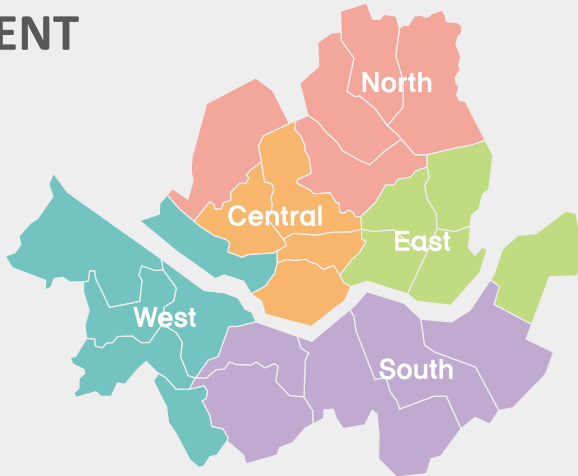


Seoul Traditional Market

Tourist Guide



CONTENT



Finding the perfect traditional market for me in Seoul ··· 04
 How to fully enjoy traditional markets in Seoul ··· 06

Section 1 Central ····· 10

- Seodaemun-gu | Yeongcheon Market ····· 12
- Yongsan-gu | Yongmun Traditional Market ····· 15
- Jongno-gu | Tongin Market ····· 18
- Jung-gu | Namdaemun Market ····· 22

Section 2 East ····· 26

- Gangdong-gu | Amsa General Market ····· 28
- Gwangjin-gu | Hwayang Jeil Market ····· 31
- Dongdaemun-gu | Seoul Yangnyeong Market ····· 34
- Seongdong-gu | Ddukdo Market ····· 38
- Junngang-gu | Urim Market ····· 41



Section 3 West ····· 44

- Gangseo-gu | Songhwa Market ····· 46
- Guro-gu | Namguro Market ····· 49
- Geumcheon-gu | Byeolbit(Starlight) Nammun Market ··· 52
- Mapo-gu | Mangwon Market ····· 55
- Yangcheon-gu | Sinyeong Market ····· 58
- Yeongdeungpo-gu | Daerim Central Market ····· 61

Section 4 North ····· 64

- Gangbuk-gu | Suyu Traditional Market ····· 66
- Nowon-gu | Gongneung-dong Dokkaebi Market ··· 69
- Dobong-gu | Banghak-dong Dokkaebi Market ····· 72
- Seongbuk-gu | Donam Market ····· 76
- Eunpyeong-gu | Yeonso Market ····· 79

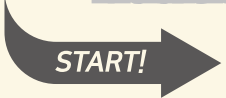
Section 5 South ····· 82

- Gangnam-gu | Yeongdong Traditional Market ····· 84
- Gwanak-gu | Sinwon Market ····· 87
- Dongjak-gu | Namseong "Four Seasons" Market ··· 90
- Seocho-gu | AT Flower Market ····· 93
- Songpa-gu | Jamsil Saemaoul Market ····· 96

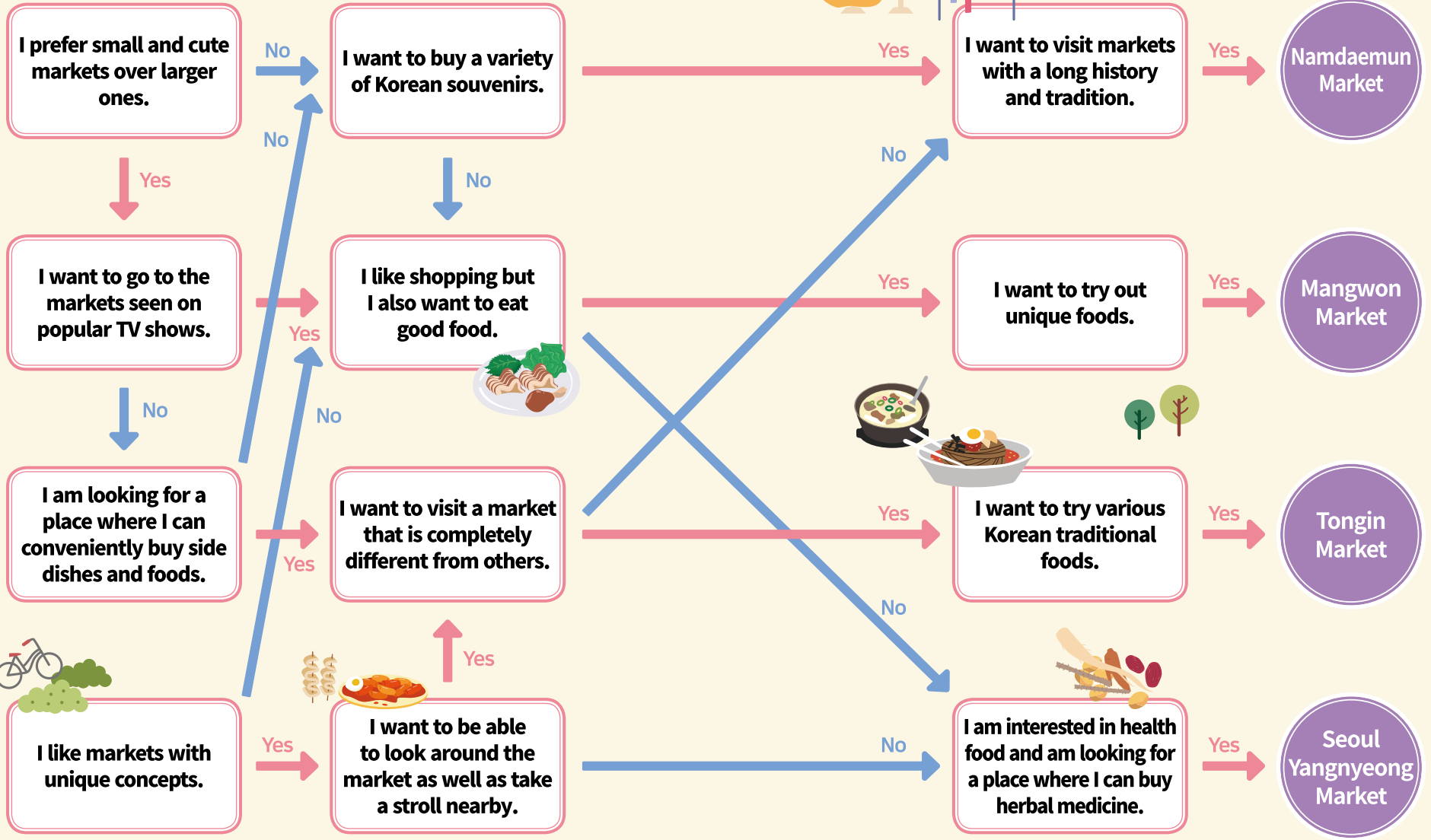
- Shopping Streets ····· 100
- Finding a Traditional Market at a Glance ····· 102

※ The traditional markets introduced in this book have been recommended by the 25 districts of Seoul.

Finding the perfect Traditional market for me in Seoul



YES or NO



How to fully enjoy your tour of the traditional markets of Seoul

Dakgangjeong



This is a deep-fried crispy chicken dish cut in bite sizes and glazed in various sauces. Freshly fried Dakgangjeong will let you enjoy heavenly crispiness. You can choose between the sweet or spicy sauce.

Gimbap



Gimbap is a dish made by wrapping cooked rice and various ingredients with gim which is dried sheets of seaweed. Gimbap comes in various styles depending on the type of fillings such as tuna and cheese. Mini gimbap is also fun to eat.

Tteokbokki



This is a dish prepared by combining chewy tteok, rice cake, with spicy and sweet sauce. If you like chewy textures, you will like tteok made with rice but if you prefer something a little bit less chewy, then the flour-based tteok or mil tteok, is a better option. Another tasty version is fried tteokbokki which is a pan-fried.

Kkwabaegi (Twisted Korean Doughnuts)



This Korean doughnut is prepared by twisting dough made of flour and glutinous rice and then deep-frying it. Be sure to sprinkle an ample amount of sugar on the freshly fried kkwabaegi.

Must-try Foods!



Hotba



This is a type of fishcake prepared by mixing mashed fish and flour. Corn dog-like hotbas can also be made with other ingredients such as sausage, tteok, and cheese. This is a tasty snack beloved by everyone regardless of age.

Kalguksu



These are home-made noodles in a rich dried anchovy stock. Even without colorful toppings or fancy side dishes, this makes for a hearty meal at a reasonable price.

Jokbal



Jokbal is a dish prepared by braising pig's trotters in soy sauce and various spices. You can enjoy tender meat and chewy skin at the same time. Fire jokbal, another option with spicy sauce, is also a popular plate.

Eomuk (fish cakes)



Koreans eat various shaped eomuk along with boiled seafood stock. This snack is especially popular during the cold winter. Different types of eomuk added in the soup offer colorful flavors.



Must-buy Items!

Traditional Handicrafts



You can purchase various items including bags made with colorful striped patterns, embroidered coin purses, and key chains. You are sure to find one within your price range. These souvenirs are especially popular as gifts for friends.

Hallyu Goods (The Korean Wave Goods)



There are plenty of diverse items such as cushions, fans, and phone cases that have the image of popular Korean celebrities. You can cherish the image of your favorite star by buying these goods.

Food Containers



Korea is among one of the few countries where you can get food containers made of diverse materials. These safe food containers are popular and widely used because of such versatility.

Jang Baguni (Reusable Shopping bag)



Jang Baguni is made of a thin and light texture which is convenient to use by folding it and carrying it in your bag. It is also eco-friendly as it helps to minimize the usage of plastic bags.



Kimchi



Kimchi is a staple in Korean cuisine that is prepared by mixing salted bokchoy and various seasonings. In the markets, you will be amazed at the different varieties of kimchi available, and then you can choose the kind you like the most and buy it at an affordable price.

Gim



Gim is known as one of the most high-protein foods among many marine plants. This savory snack prepared by roasting oiled and salted seaweed is a steady seller among foreign visitors.

Socks



Korean socks are popular since they come in various designs and are offered at reasonable prices. Also, since they don't take up a lot of room in your luggage, you can buy them in bulk. They come in diverse designs including characters from animations and images of popular idols which makes the process of choosing just as entertaining.

Beoseon



These affordable and warm Korean traditional socks make a great gift since they come in various designs. It has been gaining popularity among younger foreign visitors as a must-have-item.

Il Baji



This legwear also known as Mombbae Baji in Korea has become more popular in the recent years for comfort and stylish design. This clothing is available in various materials suited for each season.

Seoul Traditional Market

Tourist Guide



Section 1

Central

- 01. Seodaemun-gu | Yeongcheon Market 12
- 02. Yongsan-gu | Yongmun Traditional Market 15
- 03. Jongno-gu | Tongin Market 18
- 04. Jung-gu | Namdaemun Market 22

Yeongcheon Market

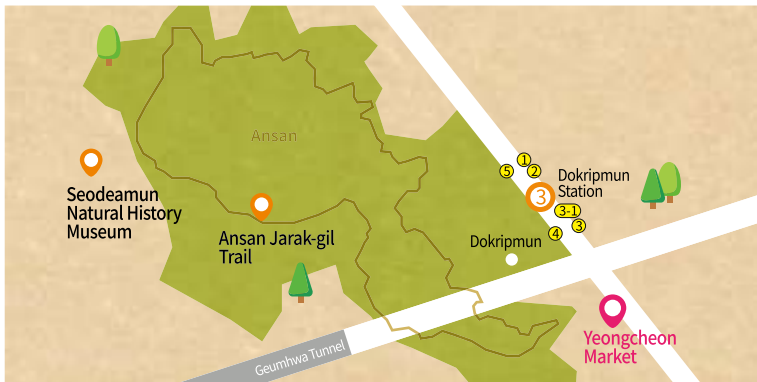
#Tteokbokki
#Foodforyourheart
#Fridaymarket

- GPS 37.570381, 126.961488
- 300 m from Exit 4 of Dokripmun Station of Metro Line 3, 4-minute walk
- 9:00-22:00 Hours vary for each shop. 189-1 Tongil-ro, Seodaemun-gu, Seoul 82-2-364-1926



This traditional market was first established back in the 1960s and offers various foods ranging from fresh fruits to seafood. Both locals and tourists who come from afar visit Yeongcheon market to try out popular street foods such as tteokbokki and kkwabaegi which were featured in numerous TV shows.

Although it is not large in size, there are some shops that sell children's toys and clothes as well as other daily necessities. The market is built with an arcade to cover the ceiling. Since the market is designed in a straight line, it is easier to plan your shopping route. Every Friday, a special discount is conducted making items especially affordable. The shops which offer such discounts place a banner in front so that you can quickly tell which ones are participating.



Must-try Food

Like!



Tteokbokki

A secret seasoning is added to the chewy rice cakes and stir-fried together. Everyone can enjoy this dish since it is not too spicy. Tteokbokki cooked without fish cake is unique to the Yeongcheon Market.



Kkwabaegi

This freshly fried snack has a deliciously chewy texture. What's amazing is that no matter how many times this awesome snack is replenished, it is sold out instantly. It is so popular that it has been introduced on numerous TV shows.



Shopping Items



Toys

Although the market sells the newest toys for children, it also has retro toys that spark nostalgic sensations in the hearts of adults.



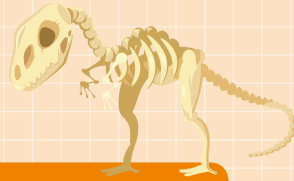
Fruits

Yeongcheon Market sells various fresh in-season fruits. It is recommended that you look around thoroughly before actually buying them since there are many different shops to choose from. You can also try out your bargaining skills with the merchants.



Nearby Tourist Sites

Yeongcheon Market



Seodaemun Natural History Museum

This museum where visitors can view the geological and biological data and records of the local environment was first established in Seodaemun back in 2003. A huge skeletal structure of an Acrocanthosaurus, a dinosaur genus from the Cretaceous Period, is displayed in the Central Hall on the first floor. Visitors can view various types of life forms as well as the origin of life in the Life Evolution Hall located on the second floor. There is a lot of interesting information about the earth's environment available on the third floor. The facility is also equipped with a library filled with science books.



- Take Line 2 of the Metro, from Exit 3 and 4 of Shinchon Station take the Seodaemun 03 bus and get off at the Seodaemun Natural History Museum stop
- Take 7021 Bus at Yeongcheon Market stop → Get off at Hongeun Hyundai Apartment stop (10 minutes) → Take 153 bus at Hongeun Hyundai Apartment stop → Get off at Seodaemun Natural History Museum stop (5minutes) → 5-minute walk
- March~October Tues.~Fri. 9:00~18:00 Sat.~Sun.~Holidays 9:00~19:00/ November~February Tues.~Fri. 9:00~17:00 Sat.~Sun.~Holidays 9:00~18:00 / Closed on Mondays
- Tickets are 6,000 Won for Adults / 3,000 Won for Youth-Military / 2,000 Won for Children
- 51, Yeonhui-ro 32-gil, Seodaemun-gu, Seoul 82-2-330-8899 <https://namu.sdm.go.kr>

Ansan Jarak-gil Trail

This circular forest trail is about 7 km long and offers a good walk for both children and seniors due to its mild slopes. The trail is well-equipped with facilities such as resting areas, an observatory, and toilets as well as several workout zones and mineral springs. It is also an ideal place for therapeutic walks since the forest consists of various trees including metasequoia, pine nut, and Korean spruces. It takes about 2 to 2.5 hours to complete the trail.

- Seoul Subway Line 3, Get off at Dorkipmun Station and take Exit 5, 6-minute walk
- 40-minute walk San 1, Bongwon-dong, Seodaemun-gu, Seoul



Central 02. Yongsan-gu

Yongmun Traditional Market



#CentralSquareRestArea
#Hangoversoup
#Childrensdayfestival

- GPS 37.536029, 126.960319
- 200 m away from Exit 3 of Hyochang Park Station on Seoul Subway Line 6, 3-minute walk
- 9:00~20:00 Hours vary for each shop.
- 38-14, Hyochangwon-ro 42-gil, Yongsan-gu, Seoul 82-2-3275-0883 <http://yongmunsijang.kr>



Yongmun Traditional Market which started forming back in 1965 is the largest and the most active market in Yongsan-gu.

Five decades of history have left some lasting traces in every corner of the market. Although this old-styled market may not be as convenient to look around compared to more modernized markets, it has that warm and cozy feeling of old village markets. You can buy fresh vegetables and fruits as well as fish along with other foods. Also, there are some shops where you can find different styles of clothing and accessories at affordable prices. Each year a special festival is held on Children's Day along with other performances.



Must-try Food

♥ Like!

Haejang Guk (Hangover Soup)

This is a rich flavored soup braised in a huge cauldron. The pot is filled to the top with tender meat and fresh seonji (congealed cow's blood). Many people visit Yongmun Traditional Market just for its haejang-guk.



Jokbal

In the market, visitors will see jokbal being braised in huge cauldrons. The delicious scent of jokbal wafts through the air and tantalizes your nose. This particular dish braised with 13 different medicinal herbs is known for its clean flavor and chewy texture.



Shopping Items



Bread

You can get different types of bread including sweet red bean bun, cream bun, and soboro bread at very affordable prices. These may not be as fancy as those sold at popular franchise patisseries but they taste just as good.



♥ Like!

Dishes

You can buy different types of tableware generally used in households including simple plates, pots, and frying pans at wholesale price. You can also buy tableware for restaurants in bulks.



Nearby Tourist Sites

Yongmun Traditional Market



National Museum of Korea

On a par with other international museums, this huge museum consists of 6 different halls, 50 exhibition rooms, and a total of 12,044 relics. The museum is equipped with a temporary exhibition hall, special exhibition halls, and a museum for children. A beautiful outdoor garden recreating traditional Korean gardens consists of the Pagoda Garden where stone cultural assets are kept, Dragon Fall, Mirror Pond, and Cheongjaeong Pavilion. You can reserve a professional guided tour of the outdoor space by making a reservation for the Seoul Guided Walking Tour.

- 📍 Exit 2 of Ichon Station, Seoul Subway Line 4
- 🚌 Take 400 bus at Wonhyo-ro 2-ga → Get off at National Museum of Korea Yongsan Park stop (10 minutes)
- 🕒 Mon.-Tues.-Thurs.-Fri. 10:00-18:00; Wed.-Sat. 10:00-21:00; Sun.-Holidays 10:00-18:00
- 📞 137, Seobinggo-ro, Yongsan-gu, Seoul ☎ 82-2-2077-9000 🌐 www.museum.go.kr



Yeoljeongdo ("Passion Island") Cultural Street

This renovated cultural street was created by reorganizing the streets that once held old printing factories and other worn-down structures. As can be guessed from the name, young and passionate entrepreneurs gathered and opened shops one by one. The once bleak streets have taken on a new life as more shops opened to form food streets. Many people visit from far away to enjoy the shops with unique interior designs and special menus. Since public parking is not available, public transportation is strongly recommended.

- 📍 10-minute walk from Exit 2 of Hyochang Park Station on Seoul Subway Line 6 / Gyeongui Line
- 🚌 Take Yongsan 04 bus at Yongmun market → Get off at Yongsan Dreamtree Village stop (10 minutes)
- 📍 Baekbeom-ro 87-gil, Yongsan-gu, Seoul



Tongin Market



#Dosirakcafe
#Friedtteokbokki
#throwbacksacks

- GPS 37.580769, 126.969989
- Walk 500 m straight from Exit 2 of Gyeongbokgung Station on Seoul Subway Line 3
- 07:00~21:00 Closed every third Sunday of the month
- 18, Jahamun-ro 15-gil, Jongno-gu, Seoul ☎ 82-2-722-0911 🌐 <https://tonginmarket.modoo.at>



After starting as a public market back in 1941, Tongin Market has become home to more than 40 different shops. Most are food shops including restaurants and side dish shops followed by shops selling vegetables, fruits, fish, and meat.

Ever since Dosirak Café, a symbolic place in Tongin Market, was shown on a TV show, the number of visitors has increased dramatically. Visitors can purchase Yeopjeon, brass coins used within Tongin Market to buy items, and enjoy Yeopjeon Dosirak from Dosirak Café. This is the perfect food experience for those who wish to enjoy diverse foods. This is why the market is popular among foreign visitors as well.



The Symbolic Place of Tongin Market How to Experience Dosirak Cafe

- 1 Purchase Yeopjeons from Dosirak Café located on the second floor of the Customer Service Center. The minimum number of Yeopjeon you can buy is 10 and each coin costs 500 Won.


- 2 Take an empty dosirak container which is provided along with Yeopjeon coins and buy foods from Dosirak Café partner shops within Tongin Market. Most plates including tteokbokki and other side dishes can be purchased using 2-3 coins.


- 3 Come back to Dosirak Café with the full container; purchase rice and soup which are sold for 1,000 Won each. If you don't have enough Yeopjeon, the remaining can be paid in cash.


- 4 Utensils and water are provided at the Dosirak Café. Grab a table and enjoy your Dosirak. If you use Dosirak Café, you will get a discount of 500 Won when you purchase any beverage within the café located inside the Customer Service Center.



Dosirak Café Hours (Yeopjeon sale hours)
Tues.-Fri. 11:00~15:00, Weekends-Holidays 11:00~16:00
(Closed: Mondays and every third Sunday of the month)

Must-try Food

Fried Tteokbokki

This savory treat is stir-fried in an ample amount of oil which makes it crispy on the outside while still retaining its chewiness inside. The spicy oil tteokbokki is the original version but other options such as soy sauce oil tteokbokki is also popular.



Like!

Dakkochi (Chicken Skewers)

Tender chicken thighs and green onions are skewered on a long stick to make it easier to hold with one hand. You can choose from other options ranging from cheese, spicy chicken, and chicken grilled on salt.



Shopping Items

Retro Snacks & Toys

You can buy retro snacks which will bring back childhood memories. There are also retro toys that have become very difficult to find these days. Sweet dalgona (Korean hard candy) is also popular.



Bugak

Bugak is deep fried food prepared by covering ingredients such as dried seaweed, pumpkin, and lotus root with sticky rice paste. This savory food can be enjoyed as a side dish as well as a snack. There are various types of bugak available in Tongin Market including those made with mushroom, seaweed, and lotus root.



Nearby Tourist Sites

Tongin Market



Ikseondong Hanok Village

This street is filled with hanok (Traditional Korean house) dating back to the 1920s. Recently, cafés, shops, and galleries with unique charms have opened up in remodeled hanoks forming a café street. You can enjoy the warmth of hanok, stylish cafes, and restaurants all in the same area.



- Take Exit 6 at Jongno 3-ga Station on Subway Lines 1, 3, 5.
- Take 7212 bus at Tongin Market Jongnogu Health Center stop → Get off at Jongno 3-ga. Tapgol Park stop (10 minutes) → 10-minute walk
- Streets near Supyo-ro 28-gil, Jongno-gu, Seoul

Yun Dong-ju Literature Museum

This museum was built by remodeling an abandoned water pumping station to share Yun Dong-ju's passion for literature and his works. Various pieces are displayed including the photo printed version of his work with his signature. Behind the museum lies a trail called the Hill of the Poet.

- Use Exit 3 of Gyeongbokgung Station on Subway Line 3. Take 1020, 7022, 7212 bus and get off at Jahamun Gogae, Yun Dong-ju Literature Museum stop
- Take 7022 bus at Tongin Market Health Center stop → Get off at Jahamun Gogae. Yun Dong-ju Literature Museum stop (10 minutes)
- Tues.-Sun. 10:00-18:00 Closed on Mondays
- 119, Changuimun-ro, Jongno-gu, Seoul 82-2-2148-4175



Daerim Art Museum

Initially established as the first museum for photographic arts in Korea, the museum now holds exhibitions on various art works beyond photography. It is known to host unique exhibitions and events to allow anyone to conveniently access artistic works. More details regarding exhibitions can be found on the official website.



- Use Exit 3 of Gyeongbokgung Station on Subway Line 3, 3-minute walk
- 10-minute walk
- 21, Jahamun-ro 4-gil, Jongno-gu, Seoul 82-2-720-0667
- www.daelimmuseum.org

Namdaemun Market



#largestinSeoul
#childrensclothing
#souvenir

- GPS 37.559213, 126.977658
- Connected with Exit 5 of Hoehyeon Station on Subway Line 4
- 21, Namdaemunsijang 4-gil, Jung-gu, Seoul
- 9:00~18:00 Hours vary for each shop. / Many shops are closed on Sundays.
- 82-2-753-2805
- www.namdaemunmarket.co.kr



This large market consists of more than 10,000 shops spread across a total area of 66,000 m². About 300,000 visitors come to the market every day. Namdaemun Market is without a doubt the symbolic traditional market of Seoul. A wide range of items including clothing, accessories, kitchenware, fresh produce, fish, foods, and crafts can be found in this market. Also, this place is popular among tourists since they can find all must-buy souvenirs and shopping items in one spot. In between many shops you will see places where you can grab some food such as hotteok, kalguksu, and spicy braised hairtail stew. There are many people who visit Namdaemun Market just for the food.



Must-try Food

Like!

Vegetable Hotteok



Every morning, freshly mixed and perfectly fermented hotteok dough is used to wrap various fillings including cellophane noodles made from sweet potato starch and vegetables. Freshly fried hotteok will fill your mouth with crispiness and moist chewiness at the same time.

Spicy braised hairtail fish stew

This symbolic food is so popular that there is a small street inside the market named after this particular dish. One of the restaurants boasts 50 years of history. This irresistibly savory dish is cooked only using hairtail fish caught in Korea and seasoned with hot spices. You can request to have your side dishes replenished for free.



Kalguksu

If you order kalguksu you will be getting naengmyeon for free and ordering boribap will get you both kalguksu and naengmyeon for free. This delicious cuisine cooked with potato and pumpkin braised in rich stock will enrich your mouth with a memorable savory taste. The small chairs placed along each side of the narrow street creates a vibrant atmosphere.



Shopping Items



Like!

Camera

You can view cameras from diverse brands ranging from now discontinued film cameras to the newest high-tech cameras and compare the options before you make the purchase. Some stores sell used cameras as well.



Souvenir

You can browse through souvenirs of varying prices ranging from cheaper ones to more expensive traditional hand-made items.



Children's Clothing

From 9:30 to 17:00 the stores are managed as retail stores but then change to wholesale businesses after 22:00. Since many shops make their own children's clothes, visitors will be able to look at different designs in one area.



Glasses

Glasses, contact lenses, and sunglasses of diverse designs are available for various prices. Not only do these shops sell products made and designed in Korea but they also offer global designer brands.



Nearby Tourist Sites

Namdaemun Market



Seoul Traditional Market Tourist Guide



Seoullo 7017 Tourist Terminal

Seoullo 7017 Tourist Terminal recommends a customized tour based on 31 places listed in Magnificent Seoul. The terminal will provide more information on locations from Magnificent Seoul 31 and suggest a tour customized to suit your preference. Also, it hosts diverse monthly events and classes and offer a sharing space where tourists traveling in Seoul can exchange the pictures and information they have gathered.



- Subway Line 1, 4 Seoul Station Exit 2, Subway Line 2 Chungjeongno Station Exit 5 10:00-19:00
- Seoullo 7017 Tourist Terminal, 22-1, Manri-dong 1-ga, Jung-gu, Seoul 82-2-312-1697
- <https://korean.visitseoul.net/seoullo7017>

Seosomun Historical Park



This site where many people including religious men and reformers from the late Joseon period sacrificed their lives, has been reborn as a multi-cultural complex with a square, a historical museum, and other convenient facilities for local residents. Located in the center, the Hyun Yang Tower, the memorial tower for Catholic martyrs, is the largest

holy place for Catholics in Korea. Historical Museum at Seosomun exhibits the history of the late Joseon Period and the flow of ideology back then.

- Subway Line 2, 5 Chungjeongno Station Exit 4, 7-minute walk
- 5, Chilpaero, Jung-gu, Seoul 82-2-313-7986 www.seosomun.org

Bank of Korea Money Museum

This stone edifice built in the Renaissance style opened on June 12th of 2001 to celebrate the 50th year of the Bank of Korea. Visitors will see how money has evolved over time and learn how money is made. The museum also exhibits many rare currencies from different nations across the world. Being recognized for its value as a structure from the early modern period, it was designated as the 280th historical site back in 1981. Reservations must be made through the official website prior to viewing.



- 4-minute walk from Exit 7 of Hoehyeon Station, Subway Line 4 10-minute walk
- Mon.-Fri. 10:00-17:00 Closed on weekends and holidays *Reservations must be made in advance.
- 39 Namdaemun-ro, Jung-gu, Seoul
- 82-2-759-4881 www.bok.or.kr/museum/main/main.do

Seoul Traditional Market

Tourist Guide



Section 2

East

- 01. Gangdong-gu | Amsa General Market 28
- 02. Gwangjin-gu | Hwayang Jeil Market 31
- 03. Dongdaemun-gu | Seoul Yagnyeong Market 34
- 04. Seongdong-gu | Ddukdo Market 38
- 05. Jungnang-gu | Urim Market 41

Amsa General Market



#Domearcade
#Widehallway
#Dakgangjeon

- GPS 37.550800, 127.128964
- Subway Line 8 Amsa Station, Exit 1
- 9:00-21:00 Hours vary for each shop.
- 25, Sangam-ro 11-gil, Gangdong-gu, Seoul
- 82-2-442-1040
- www.amsamarket.com



This market was formed naturally around the nearby residential area in the late 1970s. The market consists of about 105 different shops providing various services including various foods, daily items, seafoods, and processed foods. It is the first market to have been modernized among many traditional markets located within Gangdong-gu. The floors had been remodeled using flat granite and an arcade had been installed to allow visitors to roam freely without worrying about getting wet when it rains. Its wide alleys allow visitors to have a more comfortable shopping experience even during busy hours. Amsa General Market is popular among locals as a place where they can buy quality goods at a low price. Just a 3-minute walk away from Amsa Station on Subway Line 8, it is highly accessible to visitors using public transportation.



Must-try Food

Like!

Dakgangjeong (Sweet Crispy Korean Fried Chicken)

Dakgangjeong, a savory dish made by deep-frying chicken raised in Korea, is one of the most popular dishes available in Amsa General Market. There are shops that sell mild-flavored Dakgangjeong for children.



Ggomaggimbap (Mini Gimbal)

Have fun selecting your own ingredients from a variety of choices including dried anchovies, tuna, kimchi, spam, bulgogi, and donkatsu. Visitors can also try other side dishes such as twigim (deep-fried snacks), eomuk (fish cake), and sundae (Korean blood sausage).



Shopping Items



Like!

Gangjeong

Visitors can buy soft gangjeong, a type of traditional Korean confection, made with ample amount of ground dried fruits instead of using sugar. Made with various grains, this nutty flavored snack will satiate your hunger.



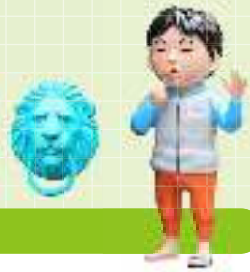
Cosmetic Products

There are some general cosmetic shops scattered across the market where you can purchase various cosmetic products at a reasonable price. These shops offer skincare products as well as hair dyes. They are known to hold frequent discount events.



Nearby Tourist Sites

Amsa General Market



Gang Pul Cartoon Street

Here visitors can view the murals depicting symbolic scenes from the cartoons created by Gang Pul, a well-known Korean cartoonist who created 'Love Story' and 'Fool'. He used to live here, which is why the area is often used as a background for his cartoons. People started drawing murals one by one to fill the walls of this once residential area. Now, the streets have more than 50 murals decorating its walls. Naturally the number of visitors increased as well. Visitors can take a special photo using beautiful murals as the background or visit Seungryong's House where they can read cartoons of various genres for free.

- 📍 Subway Line 5, Gangdong Station, Exit 4 📍 38-3, Cheonho-daero 168ga-gil, Gangdong-gu, Seoul
- 🚶 Subway Line 8 Amsa Station → Subway Line 5 Cheonho → Gangdong Station Exit 4 (10 minutes) → 5-minute walk



Iljasan Herb Astronomy Park



Located between Iljasan Mountain Natural Park and Gildong Ecological Park, this park offers dynamic charms depending on the time of your visit. It is open to the public 24 hours a day for free. During the day, more than 120 herbs grow seasonally and welcome the visitors with diverse scents. During the night, the place transforms into an observatory where visitors can watch beautiful constellations as more than 282 LED lights are

lighted up. On the east side of the park, an observatory is installed to allow visitors to enjoy the sunrise. From May to October, the facility organizes astronomy observation programs for youths in the small observatory in the park.

- 📍 Take 370, 341, 112-5 bus at exit 6 of Cheonho Station, Subway Line 5, and get off at Gangdong Xi Plaza Apartment stop. Then walk toward Hanam for 10 minutes.
- 🚶 Take 340 bus at Samsung Gwangnaru Apartment. Amsadong Prehistoric Settlement stop → Transfer to 3412 bus at Godeok stop → Get off at Gildong Ecological Park (about 20 minutes) → 5-minute walk
- 📞 86, Dunchon-dong, Gangdong-gu, Seoul 📞 82-2-3425-6473 🌐 <http://cafe.daum.net/herbparks>

+ Section 2

East 06. Gwangjin-gu

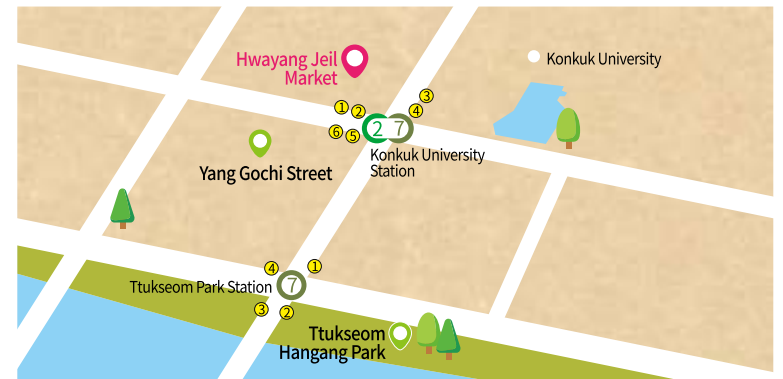
Hwayang Jeil Market

- #Singleportionsidedish
- #Trendyfood
- #Foodstreet

- 📍 GPS 37.543552, 127.069188 📍 450 m from Exit 1 of Konkuk University Station of Subway Lines 2, 7
- 🕒 9:00-22:00 Hours vary for each shop. 📍 59, Ahasan-ro 29-gil, Gwangjin-gu, Seoul
- 📞 82-2-465-3706



It is natural for food streets to form around universities. If you walk past 'Kondae Food Street', you will reach Hwayang Jeil Market. Despite being rather modest in size, this traditional market is popular among locals and younger people on the lookout for trendy foods. Since many single-person households are scattered across the area there are many shops that sell smaller portions of side dishes, teok, and other street snacks for a quick and convenient meal. Of course, these are offered at low price. This is why many students with a light purse come here. Another perk about the place is that it allows visitors to buy fresh fruits and vegetables in smaller portions.



Must-try Food



Waffle

You can buy fresh waffles filled with whipped cream. Try adding additional toppings including marshmallows and dalgonas to sweeten your waffle!



♥ Like!

Dakgangjeong

(Sweet Crispy Korean Fried chicken)

What is special about this dakgangjeong is that you will get fried chicken covered with sweet and spicy sauce as well as round fried potatoes. This delicious snack is also available in smaller portions for those eating alone.



Shopping Items



♥ Like!

Side dish

Side dishes are packaged into small portions for single-person households. You can also buy a single portion of rice which will complete a convenient meal.



Plant

Look around before choosing from various plants ranging from smaller cacti and succulent plants to larger air purifying plants. Don't forget to get some tips for taking good care of your plants from the shopkeeper.



Nearby Tourist Sites

Hwayang Jeil Market



Ttukseom Hangang Park

This place was already popular as a riverside park even before the opening of Hangang Park. There are facilities such as a playground for children, artificial rock climbing wall, and sports center. An outdoor pool is also available during the summer. You can see the magnificent fountain shows at the Music Fountain located behind riverside square and watch the fountain dancing along the beat of the music (May~October). Water sports such as windsurfing, water skiing, and motorboat rides are also available here. Inchworm-shaped Seoul Saenggakmaru which is connected to Exit 3 of Ttukseom Park Station has an observatory, café, and library.

- 📍 Subway Line 7 Ttukseom Park Station, Exit 2 📍 139, Gangbyeonbuk-ro, Gwangjin-gu, Seoul
- 📍 Subway Line 7, Konkuk University Station → Ttukseom Park Station, Exit 3 (10 minutes)
- ☎ 82-2-3780-0521 🌐 <https://hangang.seoul.go.kr/archives/46661>



Yang Gochi Street

This street is lined with Yang Gochi shops managed by Chinese-Koreans. It is also known as the New Chinatown due to the scent of Chinese spices and Chinese signs filling the streets. You can try Yang Gochi along with other diverse Chinese foods including kkwobarou and mara stew. Other shops on the street also sell traditional Chinese ingredients, snacks, and spices.

- 📍 250 m from Exit 6 of Konkuk University Station, Subway Line 2, 4-minute walk
- 📍 10-minute walk 📍 18-gil, Gwangjin-gu, Seoul



Seoul Yangnyeong Market



#Largestmedicinalherbalmarket
#Herbalmedicinemuseum
#Herbmedicineculturefestival

- GPS 37.578452, 127.036815
- Exit 2 of Jegi-dong Station, Subway Line 1
- 9:00~18:00 Hours vary for each shop. Most shops are closed on Sundays and holidays except for some street vendors.
- 10, Yangnyeongjungang-ro, Dongdaemun-gu, Seoul
- 82-2-969-4793
- <http://seoulyak.com>



The market has grown to become the nation's largest Oriental medicine market, and 70 percent of the Oriental medicine traded in Korea passes through it. The market became what it is now after many Oriental medicine shops started gathering around Bojewon, a medical relief center during the Joseon Period. More than a thousand shops trading medicinal herbs are scattered across an area of 270,000 m². In 1995, the market was designated by the city of Seoul as Seoul Yangnyeongsi and in 2005, it became a specialized industry district for herbal medicine, making it a popular tourist site. The market has been welcoming more and more visitors each year as interest in Oriental medicine started to grow across the world. The market hosts the Herbal Medicine Culture Festival every year.



Recommended Medicinal Herbs to buy in Seoul Yangnyeong Market

You can find almost all medicinal herbs in Yangnyeong Market. The market cooperates with the Gangbuk Agro-fishery Inspection Center to conduct quality inspections and stabilization process to make sure that herbs with guaranteed quality are distributed. The prices of the main herbs are posted on the official website to ensure transparency.

Hwanggi (Mongolian milkvetch)

This herb is helpful for those who become fatigued easily and tend to sweat a lot by relieving the body of chronic exhaustion. It is often used to replace Ginseng in health food.



Galgeun (Pueraria lobate Ohwi)

This is the root of kudzu which belongs to the Leguminosae and Pueraria genus. It helps relieve muscle tension, colds, fever, and headaches.

Jujube

Jujube removes toxins and reactive oxygen to provide an anti-aging effect. It also acts as an agent to balance out the effects of different herbs.



Licorice

Licorice balances out the effects of different herbs and lessens the toxicity of medicines. This is one of the essential medicinal herbs in Oriental medicine.

Ulmus Macrocarpa

This is the bark of the elm which helps the body resist respiratory and skin diseases by providing antibacterial effect. It also works as a diuretic.



Seoul Oriental Medicine Promotion Center

This is a cultural complex center for Oriental medicine where the visitors can learn and experience the traditions related to the field of Oriental medicine. Located within Seoul Yangnyeong Market, the visitors can roam around freely from the 1st to the 3rd floor to look at the displays and experience them.

1st Floor

• Visual Experience Center

Visitors can watch an interactive video on the growing and harvesting of herbs.

• Oriental Medicine Product Promotion Hall

Oriental medicines, health products, tea, and other products related to Oriental medicine are exhibited by theme.

• Culture Education Experience Center

The center offers various experience programs such as Oriental soap making, tea light making, and more.

• Dress Experience Center

Visitors can take special photos wearing outfits worn by those involved in the medical profession back in the Joseon Period.



2nd Floor

• Seoul Yangnyeongsi Herb Medicine Museum

Various records and information about Korean Oriental medicine are exhibited.

• Foot Spa Experience Center

Come to the center to experience a foot spa using herbal water. (5,000 Won per team)

• Hours : Tues.-Sun. 10:30, 13:30, 15:00, 16:30



3rd Floor

• Bojewon Mobile Health Center

The center provides Oriental medicine treatment for seniors over the age of 65, medical benefit recipients, those with 1st-3rd degree disabilities, and people of national merit.

• Oriental Treatment Center

Visitors can learn what constitution group they fall into and experience organic herbal medicine mask pack and aromatherapy. (5,000 Won)



Nearby Tourist Sites

Seoul Yangnyeong Market



Hongreung Forest

The first arboretum in Korea, Hongreung Arboretum was established as a trial research forest with systematically collected plant genetic resources from Korea and abroad. The arboretum consists of 11 areas divided based on each theme including the coniferous zone, landscape tree zone, and shrub zone. In total, the arboretum manages more than 2,035 different plant genetic resources. Hongreung Forest originally housed 'Hongrueng', the tomb of Empress Myeongseong. However, the tomb was relocated to Namyangju in Gyeonggi Province, and only a sign remains to mark the original location of the tomb. Visitors can participate in the forest guide program during weekdays with reservations.



7-minute walk from Exit 3 of Korea University Station, Subway Line 6 Take 201 bus at Jegi-dong Station. Seoul Yangnyeongsi stop → Get off at King Sejong Memorial Hall (10 minutes)

Sat.-Sun. March-October 9:00-18:00 November-February 9:00-17:00 *Make reservationa Tues.-Fri. Closed on Mondays and holidays 57, Hoegi-ro, Dongdaemun-gu, Seoul

82-2-961-2777

King Sejong Memorial Hall

At the King Sejong Memorial Hall, visitors can see the achievements and the life of King Sejong. There are also outdoor exhibits including the Supyo (Treasure No. 838), a device created to measure the depth of streams, and Yeongreung Sindobi (Treasure No.1805), a monument placed to commend King Sejong's life. This two-story memorial hall displays the achievements of King Sejong during his reign of 32 years in 24 Oriental paintings. Visitors will also marvel at the reference documents used for Hunminjeongeum, Cheugugi(rain-gauge), Haesigye (sun dial), and Mulsigye (water clock).



8-minute walk from Exit 3 of Korea University Station on Subway Line 6

Take 201 bus at Jegi-dong Station. Seoul Yangnyeongsi stop → Get off at King Sejong Memorial Hall (10 minutes)






March-October 9:00-18:00 November-February 9:00-17:00 Closed on Mondays

Adults 3,000 Won, Students 1,500 Won 56, Hoegi-ro, Dongdaemun-gu, Seoul

82-2-969-8851 <http://sejongkorea.org/>

Ddukdo Market

#Youthmall
#Livefishmarket
#Ddukdo youthmarket

-  GPS 37.538068, 127.054402
-  700 m from Exit 3 of Seongsu Station at Subway Line 2, 10-minute walk
-  9:00-21:00 Hours vary for each shop.
-  6-42, Seongdeokjeong 15-gil, Seongdong-gu, Seoul
-  82-2-464-4426



Formed back in the 1960s, the name for Ddukdo market originates from the former name of Ddukseom. About 120 shops scattered across the market sell various items including vegetables, fruits, meat, clothing, and daily items. The shops which sell live fish can be mostly found under the banner of Ddukdo Live Fish Market located in the center of the market. Ddukdo Market also organizes the Ddukdo Youth Market, a promotional program to help young adults open shop. The Youth Mall was opened recently to provide a communal space for youth where various events including street markets filled with diverse sellers and busking performances can be held.



Must-try

Food

 Like!

Kodari-jjim (Braised semi-dried pollock)

This plate is cooked with semi-dried pollock with its intestines cleaned out and then braising it in a spicy sauce. The semi-dried pollock gives it a chewy texture, and you can request the degree of spiciness when you order.



Gopchang

This dish consists of stir frying chewy pig intestines with a mixture of vegetables. The spicy sauce removes any unpleasant scents from the intestines. Be sure to leave some space in your belly to mix a bowl of rice with the remaining sauce!



Shopping Items



 Like!

Clothing

You can buy all types of clothing ranging from underwear and daily wear to something fancy for a special occasion. There is a variety of designs to choose from and they come in different sizes at a very affordable price.



Geoneumul (Dried Seafood)

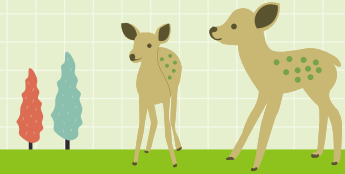


There is a wide range of dried seafood including dried pollock, anchovy, and shrimp - all of which is cleaned and cut to suit your needs. Since most of the products are packaged in small containers, you can buy just the right quantity.



Nearby Tourist Sites

Ddukdo Market



Seoul Forest

This is the first park ever in which the residents were involved in every step of the process starting from the establishment of the facility to the management of the programs. The facility consists of four themed parks: 'Cultural & Art Park' with a playground and family garden, 'Eco Forest' with a cloud bridge and deer habitat, 'Experimental Learning Center' with various themed gardens for butterflies, bees, and a small animal house, and 'March Plants Garden' with a forest experience center and ecological learning center. Since the forest is spread out across a large area, it is recommended that you take a map from the information center.

- 5-minute walk from Exit 3 of Seoul Forest Station on Subway Suin-Bundang Line
- Take 2413 bus at Ddukdosijanggugil stop → Get off at Ddukdo Arisu Water Purification Center Arisu Museum stop (10-minute walk) 00:00~24:00 Hours vary for each facility. Please refer to the official website for details on operating hours 273, Ttukseom-ro, Seongdong-gu, Seoul
- 82-2-460-2905 <http://seoulforest.or.kr>



Seongsu-dong Handmade Shoe Street



Hand-made Shoe Street started to form in the 1970s when hand-made shoe shops started gathering one by one. Currently, 70% of the hand-made shoe producers in Korea are located along the street, making this place the largest hand-made shoe street in the country. The entire process starting from product development and design to manufacturing and distribution takes place in a single production chain. You can purchase various styles of hand-made shoes. Many structures symbolizing hand-made shoe street can be found across the street along with the Shoe Theme Park.

- 115 m from Exit 4 of Seongsu Station at Subway Line 2, 1-minute walk
- 10-minute walk <http://www.seongsushoes.or.kr>



+ Section 2

East 09. Jungnang-gu

Urim Market

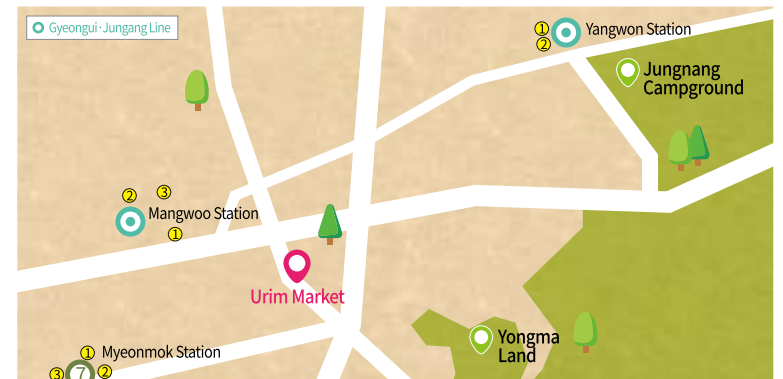


#Groceryshoppingcart
#Largeparkingspace
#Accessory

- GPS 37.598517, 127.097579
- 580 m from Exit 1 of Mangwoo Station, Subway Gyeongui-Jungang Line, 8-minute walk
- 7:00~21:00 Hours vary for each shop. 52-4, Mangu-ro 62-gil, Jungnang-gu, Seoul
- 82-2-436-3598 <http://urimsijang.co.kr>



Urim Market used to be the place where cows from across the country were temporarily kept before being sent off to the cattle market in Majang-dong. It was a perfect place for cows to get fed and rested after a long journey due to its geographical location and fertile land with lots of water and grass. The name 'Urim(牛林)' actually means cow forest. The market is always filled with a vibrant atmosphere thanks to the merchants who always strive to provide fresh ingredients at a fair price. This was the first traditional market in Korea to have a dome-shaped arcade installed as part of a modernization project back in 2001. There are also shopping carts available in the market in order to implement some of the comforts of large supermarket chains onto the traditional market.



Must-try Food

Chapssal doughnut Kkawbaegi

Freshly twisted and fried kkwabaegi is the best snack to satiate your hunger between meals. Using an ample amount of glutinous rice powder in its dough, these doughnuts are crispy on the outside while retaining that chewiness inside.



Like!

Hand-made Hotba

Hotba is made by frying prepared dough of fish cake wrapped around inner ingredients including vegetables, sausages, rice cake, and cheese on site. If you enjoy a kick in your snacks, hotba with cheongyang chili pepper is the ideal option for you.



Shopping Items



Like!

Accessory

You can purchase trending styles of accessories including earrings, rings, and necklaces as well as those for daily use. The prices are very competitive.



Fish

You can choose from a wide range of fresh fish caught in Korea. These fish are cleaned and cut for free upon request. You can have them prepared for various recipes of your choice including braising, frying, and boiling.



Nearby Tourist Sites

Urim Market

Seoul Traditional Market Tourist Guide



Yongma Land

First opened in 1983, this old amusement park that was closed down in 2011 was reborn into a location for filming. The place started to become popular after it was featured in popular TV shows and music videos of famous idols. You can get a unique picture with old amusement rides in the background. However, public access is limited if there is a filming schedule for TV shows or movies. Be sure to visit the official website and check the calendar since all schedules and notifications are posted on the official website.

- 🚌 Take 242 bus at Exit 2 of Myeonmok Station, Subway Line 7. Then get off at Yongma Park Entrance stop. 10-minute walk
- 🕒 It takes about 15 minutes to walk 🕒 9:30-18:30 closing hours vary for each month
- 👤 Adults 10,000 Won, High school students and younger 5,000 Won
- 📍 118, Mangu-ro 70-gil, Jungnang-gu, Seoul
- ☎ 82-2-436-5800 🌐 <http://cafe.naver.com/yongmaland>



Jungnang Campground



This place of healing within the city was created by remodeling an abandoned space located in a development restriction zone. The main concept was to retain nature in its original state as much as possible by minimizing the installation of artificial structures. Reservations must be made to book a spot. Camping equipment including tents, hammocks, and tarp (additional fee) can all be rented. Family barbeque is also available upon reservation. Visitors conveniently enjoy camping with none of the hassle. There are other facilities such as a playground and nature experience center.

- 📍 400 m from Exit 2 of Yangwon Station at Subway Gyeongui-Jungang Line, 4-minute walk
- 🚌 Take 2227 bus at Samyongsa Temple → Get off at Yangwon Station (10 minutes)
- 📍 110, Mangu-ro 87-gil, Jungnang-gu, Seoul 🌐 www.joongrangsoop.com



Seoul Traditional Market

Tourist Guide



Section 3

West

- 01. Gangseo-gu | Songhwa Mural Market 46
- 02. Guro-gu | Namguro Market 49
- 03. Geumcheon-gu | Byeolbit Nammun Market . 52
- 04. Mapo-gu | Mangwon Market 55
- 05. Yangcheon-gu | Sinyeong Market 58
- 06. Yeoungdeungpo-gu | Daerim Jungang Market 61

Songhwa Mural Market



#Mural
#Sidedishbundle
#Deliveryservice

- GPS 37.549366, 126.835878
- Exit 4 of Woojongsan Station at Subway Line 5
- 9:00-19:00 Hours vary for each shop.
- 263-29, Gangseo-ro, Gangseo-gu, Seoul
- 82-2-2696-5225
- www.songhwasijang.com



The 'Songhwa Mural Market' was so named when it was selected as a part of the Street Market Promotion Project back in 2016. In fact, many murals depicting various global masterpieces are drawn on the ceilings of the Songhwa Mural Market. Shops sell a wide range of goods including agricultural and fishery products, clothing, and daily products. Bundles of packed side dishes for convenient daily meals are especially popular. Despite being rather small in size, the market offers a convenient shopping experience since the shops are organized into zones.

Also, being connected with Woojongsan Station of Subway Line 5, the market is easy to access through public transportation. Parking spaces are available for customers who drive to the market. Parking is validated when you make a purchase in the market.



Must-try Food

Eomuk

Eomuk spiced up with hot sauce is especially popular. Hot sauce is added to a clear soup to balance out the oily flavor and add a savory taste.



Sotteok Sotteok

This snack is made by skewering tteok and a Vienna sausage in a row. Enjoy this savory snack by adding spicy sauce or honey mustard to suit your taste.



Shopping Items



Side dish bundles

Various side dish bundles are one of the most popular items sold at the Songhwa Mural Market. There are a wide variety of side dishes including various seasoned vegetables, kimchi, salted seafood, and other tasty options in small portions.



Like!

Fruits

The Songhwa Mural Market is widely known as the place where you can get fruits at especially cheap prices. You will have a wide range of options to choose from since there are plenty of fruit vendors offering a variety of fresh fruits.



Nearby Tourist Sites

Songhwa Mural Market



Seoul Botanical Garden

This is the first modern arboretum in Seoul that combines a botanical garden and park. The garden is divided into four parts: Forest Field, Botanic Garden, Lake Garden, and Marsh Park. The Botanic Garden, the arboretum part of the facility, has outdoor gardens created to resemble a traditional Korean garden and a greenhouse where various plants representing 12 countries from across the world are displayed. There is an entrance fee for the Botanic Garden including the greenhouse. The remaining parts of the garden are free all year round.

- Exit through Exit 3, 4 of Magoknaru Station at Subway Line 9
- Get on to Gangseo 06 bus → Get off at Byeonjeonso (Substation) stop (10 minutes)
- Botanic Garden March~October 9:30~18:00 November~February 9:30~17:00
- 5,000 Won for adults 3,000 Won for youth (13~18 y/o) 2,000 Won for children (6~12 y/o)
- 161, Magokdong-ro, Gangseo-gu, Seoul 82-2-2104-9716 <http://botanicpark.seoul.go.kr>



Heojun Museum



This museum displays the life and works of renowned Joseon-era doctor, Heo-jun who is also the author of Donguibogam, an encyclopedia of medical knowledge. The place exhibits various information on herbal medicine including the works of Heojun and other documents recording the development of Oriental medicine in Korea. You can find more information and learn about the benefits of various medicinal herbs. The facility is

also equipped with an experience center for children where diverse events are frequently held.

- 700m from Exit 1 of Gayang Station at Subway Line 9, 10-minute walk
- Take 6645 bus at Woojongsan stop → Seojin Special School. Post Office. Heojun Museum stop (20 minutes)
- March~October 10:00~18:00, November~February 10:00~17:00
- Entrance fees are 1,000 Won for adults, 500 Won for students (elementary school~19 y/o)
- 87, Heojun-ro, Gangseo-gu, Seoul
- 82-2-3661-8686 www.heojun.seoul.kr



+ Section 3

West 11. Guro-gu

Namgu-ro Market



#Fashiontown
#Ojakgyostreet
#Gugurestarea

- GPS 37.490708, 126.884927 600 m from Exit 6 at Namguro Station at Subway Line 7, 9-minute walk
- 9:00~21:00 Hours vary for each shop. / Closed every fourth Tuesday of the month 54, Gurodong-ro 26-gil, Guro-gu, Seoul 82-2-855-8509 www.namguromarket.com



This is the main market of Guro-gu. Various items including agricultural and fishery products, Chinese foods, side dishes, clothing, and various industrial products are sold here. Visitors and children who need to take a breather can go to the Gugu Resting Area. Since many Chinese-Korean and Chinese people reside in the neighborhood, you can easily spot Chinese shop signs and Chinese foods vendors. This market in which the cultures of Korea and China are intertwined harmoniously is a sight exclusive to the Namguro Market. A receipt of an item brought in the market can be used to validate parking in the Guro 4-dong the Parking Lot.



Must-try Food

Sundae
(Korean blood sausage)

Each shop sells a variety of different sundaes made on-site. You can also try Chinese sundae filled with glutinous rice which is twice as thick as the ordinary sundae found in Namguro Market.



♥ Like!

Tteok

Every dawn, a variety of tteok is made. Have fun choosing from a wide range of delicious tteok from freshly baked warm siru-tteok, sweet ggul-tteok to chewy ingeolmi.



Shopping Items



Furniture

Look around before choosing from a variety of different furniture including bedside tables, desks, and coffee tables. You have plenty of options to choose from since there are many furniture shops located close to each other.



♥ Like!

Clothing

Eunhasu Street in Namguro Market is lined up with various shops trading different types of clothing ranging from underwear, women's wear, men's wear, children clothing, to traditional hanboks and will let you have an entertaining time for shopping.



Nearby Tourist Sites

Namguro Market



Pureun Arboretum

The first arboretum in Seoul, this eco-friendly space houses more than 2,400 different kinds of plants. This facility is divided into 25 different theme parks including the French Garden and British Garden decorated with plants unique to those countries. There is a vast field of reeds spread across the reservoir within the arboretum. You can stroll along the wooden deck installed around the reservoir. The facility is also equipped with a small library and forest education center.

- 🚌 Take Guro07 bus from Exit 3 of Onsu Station at Subway Line 1, 7. Then get off at the Back Gate of the Pureun Arboretum.
- 📍 Namguro Station at Subway Line 7 → Get off at Cheonwang Station and take 27 bus → Get off at the Back Gate of the Pureun Arboretum
- 🕒 5:00~22:00 📍 240, Yeondong-ro, Guro-gu, Seoul 📞 82-2-2686-3200
- 🌐 <http://parks.seoul.go.kr/template/sub/pureun.do>



Hangdong Railroad

This railroad stretches 4.5 km connecting Oryu-dong in Guro-gu to Bucheon in Gyeonggi Province. Currently, the road is widely known as a trail for people rather than as a rail for trains. As you walk along the rail tracks, you will find yourself in a unique photo spot. It might be fun to look for special engravings left in the middle of the rail. Since the rail is connected with the Pureun Arboretum and Guro Ollegil, it is recommended that you add Hangdong Railroad in your half-day trip course.

- 🚶 400 m from Exit 3 of Cheonwang Station at Subway Line 7, 6-minute walk
- 📍 Namguro Station at Subway Line 7 → Cheonwang Station Exit 3 (10 minute) → 10-minute walk
- 📍 1189, Ori-ro, Guro-gu, Seoul



Byeolbit (Starlight) Nammun Market



#Wedsaleday
#Pricetagsystem
#Byeoribread

- GPS 37.473090, 126.900632
- 82-2-868-9727
- https://blog.naver.com/nm_mk
- Take 5617, 5627 bus from Exit 1 of Guro Digital Complex Station at Subway Line 2, Get off at Munseong Elementary School stop
- 99:00~21:00 Hours vary for each shop.
- 17, Siheung-daero 144-gil, Geumcheon-gu, Seoul



After being called Nammun Market until 1970, the place was renamed Byeolbit Nammun Market in 2018 and went through a complete renovation. Currently, about 120 shops are spread across the market and every one of them participates in a price tag system which mandates shops to clearly mark the place of origin and price of each product. Since the route from the entrance to the exit lies in a straight line, it is easier to look at the goods. The market a special discount event every Wednesday and holds a variety of seasonal events including the Shinbaram Festival in spring and the Society Festival in fall. Facilities such as a public restroom and parking lot are available for visitors' convenience.



Must-try Food

Byeori Bread

Byeori bread is a special bread only sold in Byeolbit Nammun Market during special events. This star-shaped bread filled with sweet red bean paste is especially popular among children.



Chinese Snacks

You can try giant Chinese dumplings, king kkwabaegi, and hotteock. The many thin layers give kkwabaegi the extra crispiness like pastries.



Like!

Shopping Items



Mixed Grains

Shops sell mixed grains in small packages at affordable prices. You can see the information about its origin and price at a glance.



Like!

Nuts

You can buy a variety of quality nuts such as pistachios, omija, and pecans all of which are both delicious and good for your health. You can also check the origin of the each product at a glance.



Nearby Tourist Sites

Byeolbit(Starlight) Nammun Market



Gamrocheon Ecological Park

This is the place where you can enjoy a relaxing stroll and indulge in the beauty of nature. This artificial marsh was created to allow various organisms to live as they would in their natural habitat. There is a wooden deck installed around the pond. You will be able to observe up close animals and plants as well as water plants growing in the pond. The park also has the Chaekdalsame, a small library within the forest, and an ecological playground for children.

Take Geumcheon08 bus at Exit 1 of Doksan Station at Subway Line 1. Get off at Public Culture Sports Center stop.

Take Geumcheon08 bus at Nammun Church Stop → Get off at Public Culture Sports Center stop (10 minutes)

373, Doksan-dong, Geumcheon-gu, Seoul <http://parks.seoul.go.kr/parks/detailView.do?pldx=39>



Hoapsa Temple

This is a traditional temple established by Muhak Daesa back in 1393. The temple was originally built to stifle the tiger's energy stored within Hoamsan Mountain (Samseongsan) since this energy could threaten the well-being of Hanyang, the capital of Joseon. Seokyaksa Seated Buddha, Seoul City's Cultural Materials No.8, can be found in Yaksajeon. You will find yourself at the entrance of Hoapsa easily by following along the Hoameulsolgil Path which connects Hoamsan Fall to Hoapsa Temple. A wooden deck was installed to cover the entire length of the path to make it easier for visitors to stroll around.

Take 5517 bus at Exit 3 of Seoul National University Station at Subway Line 2. Get off at Hoapsa Temple stop.

Take 5619 bus at Doksan-dong Nammun Market stop → Get off at Eunhaengnamu Intersection stop and Transfer to Geumcheon01 bus → Get off at Byeoksan Apartment 1 (20 minute) → 15-minute walk

278, Siheung-daero, Geumcheon-gu, Seoul 82-2-803-4779 www.hoapsa.org



+ Section 3

West 13. Mapo-gu

Mangwon Market



#TVshowappearance
#CafeM
#Dakgangjeong

GPS 37.556571, 126.906078 350 m from Exit 2 of Mangwon Station, Subway Line 6, 5-minute walk

9:00-22:00 Hours vary for each shop. 14, Poeun-ro 8-gil, Mapo-gu, Seoul

82-2-335-3591 <https://mangwonsijang.modoo.at>



This market consisted of only a few small shops gathered around Mangwon-dong streets back in the 1970s. Now it is visited by more than 20,000 people every day. Many locals and tourists from other areas come to the market since there are other interesting places including Mangridangil and Hangang Yusuji to visit. In recent years, the market has become widely known as a popular spot for food tours after appearing on several popular TV shows. You can order beverages at Café M located on the 1st floor of the Merchant Committee Office and eat the food you purchase from the market. A shopping bag rental service is provided for visitors of Mangwon Market. Since the market is located close to Mangwon Station, it is easy to reach by public transport. You can also use the parking lot at Mangwon-1-dong Community Center if you are driving.



Must-try Food



Dakgangjeong

Aside from regular spicy and sweet sauce, you can try dakgangjeong covered with different sauces including cheese mustard sauce and white cream sauce. Be sure to look at the packaging if you order a beverage and dakgangjeong at the same time – it is very fun!



♥ Like!



Croquettes

The fillings of Croquettes include squid, cheese pizza, sweet potato, and japchae. Another popular menu to try here is doughnuts and kkwabaegi made with glutinous rice dough.



Shopping Items



Gejang

Delicious gejang, dubbed 'rice thief' because you can't help but mix a bowl of rice with the sauce, is marinated in the chef's secret recipe. You can choose either spicy gejang or soy sauce gejang and buy as much as you want. Be sure to taste it before deciding which one to buy.



♥ Like!



Grilled Fish

You can buy grilled eel, croaker, flatfish, and mackerel, all of which are cumbersome to cook at home. These grilled fish are packaged in small portions for a single meal and can be eaten right away after heating them up at home.



Nearby Tourist Sites

Mangwon Market



Gyeongui Line Book Street

As you come out of Exit 6 of Hongdae Station, you will see a street filled with book-related themes such as space, travel and art galleries. The structures and spaces that you come across as you stroll along the road embody countless stories about books. The street offers a chance for you to discover books which you would not ordinarily find in larger bookstores. There are other spaces for cultural events including book talks and book discussions where readers can interact with authors. This is also a good place to go on a date since it is filled with unique photo zones.

- Exit 6 of Hongdae Station at Gyeongui-Jungang Line
- Take Mapo09 bus at Mangwon Market → Get off at Donggyo-dong Samgeori (10 minutes)
- Tues.-Sun. 11:00-20:00 Closed on Mondays and holidays
- 35, Wausan-ro 37-gil, Mapo-gu, Seoul
- 82-2-324-6200
- <http://gbookst.or.kr>



Oil Reservoir Culture Park

Not accessible to the general public in the past, this old oil reservoir has been transformed into an ecological cultural space as well as a cultural complex. Oil tanks now redefine culture every day and are utilized as an experimental space for diverse performances and exhibitions. The trees that were growing in the area were preserved and taken care of to create a park and cultural space. Audio guides are available in Korean, English, Chinese and Japanese for you to listen to the in-depth stories about the Oil Reservoir Culture Park.



- Exit 2, 3 of World Cup Stadium Station at Subway Line 6, 16 minutes
- Take 271A bus at Mangwon Market.Mangwon-dong World Cup Market stop → World Cup Park Entrance.Oil Reservoir Culture Park Entrance stop (10 minutes)
- 87, Jeungsan-ro, Mapo-gu, Seoul
- Park : Open year-round, Exhibition Hall : Tues.-Sun. 10:00-18:00, Closed on Mondays
- 82-2-376-8410 <http://parks.seoul.go.kr/template/sub/culturetank.do>

Sinyeong Market

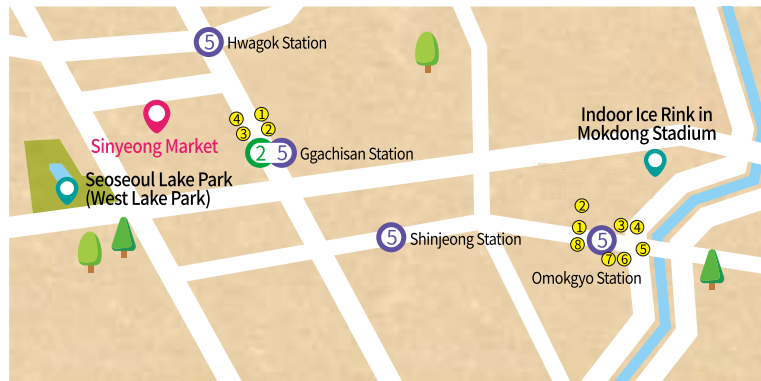


#Shoppingbagrental
#Coupevent
#Widehallway

- GPS 37.533529, 126.835366
- Take 5712, 6628, 6630 bus from Exit 2 of KKachisan Station at Subway Line 2, 5. Get off at Hwagok-dong Daerim Apartment stop. 5-minute walk
- 10:00~21:00 Hours vary for each shop.
- 161-5, Woljeong-ro, Yangcheon-gu, Seoul
- 82-2-2604-3319
- <http://www.sysj.co.kr>



This general market started forming back in 1981. With shops required to indicate country of origin on all their products, shoppers can make an informed buy safely guaranteed by the system. This market has the broadest hallways which means that shoppers can shop conveniently without brushing against other people. The shops here offer coupons that can be used within the market depending on how much you have purchased. Collected coupons can be used to exchange with gift cards or to participate in giveaway events. You can also get free delivery service on purchases over 30,000 Won.



Must-try Food



♥ Like!

Chicken

Without having to buy the whole chicken, you can select whichever part you prefer. Drumsticks, wings, and sunsal gangjeong, choose away.



Dakbal (Korean chicken feet)

Here you can buy the famous Sindang-dong-style dakbal which is also known as dakbal soup. Be sure to mix the remaining soup with a bowl of rice to make delicious fried rice after you are done with the dakbal.



Shopping Items



♥ Like!

Clothing



There are shops that sell variety of clothing - from comfortable daily wear to fancy suits - are lined up along the hallway. Although the prices are already reasonable, some shops offer additional discounts.



Shoes

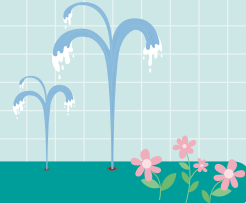


There is a wide range of shoes from sneakers, heels, children's shoes, to slippers that you can try on before making the purchase. All of them are available at affordable prices and there is a whole selection of designs to choose from.



Nearby Tourist Sites

Sinyeong Market



Seoseoul Lake Park (West Lake Park)

This is eco-friendly park created with water and rejuvenation as its themes was established in the area where the Shinwol Water Purification facility stood in the past. Spread across an area of 217,946 m², the park is the largest of its kind in the southwestern region. Various facilities including an open grass field, Mondrian Garden, and children's playground are located around the central lake.

- Take 653 bus from Exit 4 of Kkachisan Station at Subway Line 2, 5. Get off at Seoseoul Lake Park stop.
- 15-minute walk
- 26, Nambusunhwan-ro 64-gil, Yangcheon-gu, Seoul
- 82-2-2604-3004
- <http://parks.seoul.go.kr/template/sub/lakepark.do>



Indoor Ice Rink at Mokdong Stadium

Two ice rinks, each 30 m X 61m, the standard size for international hockey games, are available, one in the basement floor and the other on the ground floor. The one built on the ground floor is generally open to the public including for lessons. Since the rink on the ground floor has a safety fence installed around the outer edge, even beginners can skate here safely. The stand located on the second floor gives you a full view of the ground floor rink. Hours vary each day of the week and public access may be restricted if special events such as an ice show is scheduled. Be sure to check the official website schedule before paying a visit.



- 800 m from Exit 3 of Omokgyo Station at Subway Line 5, 11-minute walk
- Take 674 bus at Gangseo Oriental Medicine Hospital stop → Mokdong Paragon (20 minutes)
- General opening hours 14:00-18:00 Mon.-Fri.; Sat.-Sun.-Holidays 12:00-18:00 / During vacation season 10:00-18:00 / Closed on Lunar New Year and Chuseok
- 4,000 Won for adults; 3,500 for youth (middle to highschool) and 3,000 Won for children (infant, elementary school) on week days
Sat.-Sun.-Holiday fees are 5,200 for adults, 4,500 for youth (middle to high school) 3,900 for children, (infant, elementary school) *4,000 Won for skate rental
- 939 Anyangcheon-ro, Yangcheon-gu, Seoul 82-2-2649-8454 www.mdicerink.com

+ Section 3

West 15. Yeongdeungpo-gu

Daerim Jungang Market



#LittleChinaTown
#Chinesetraditionalfood
#Multicultural

- GPS 37.490884, 126.899199 400 m from Exit 12 of Daerim Station at Subway Line 2, 7, 6-minute walk
- 10:00-20:00 Hours vary for each shop. Closed every second Tuesday of the month
- 21, Digital-ro 37na-gil, Yeongdeungpo-gu, Seoul 82-2-833-8113 www.daerimmarket.co.kr



Although there are many Chinatowns across Korea, not many catch the authentic atmosphere of China as well as this one. If you are looking for a market where you can try local Chinese food and buy a variety of ingredients, Daerim Jungang Market is the perfect choice. The shops sell various spices and Chinese food such as huoguo, mara stew, and yang gochi. This does not mean the market only sells items related to China. Korean foods are also available.



Must-try Food

Youbing

A mainstay of the working-class people of China, this is cooked by deep-frying seasoned dough after flattening it. It is known for its tender yet crispy texture. Youbing can also be enjoyed with lots of green onions.



♥ Like!



Huoguo

The wonang style of this shabu-shabu type dish allows people to try both white and red soup. Compared to the spicy red soup, the white soup is milder since it only consists of stock soup.



Shopping Items

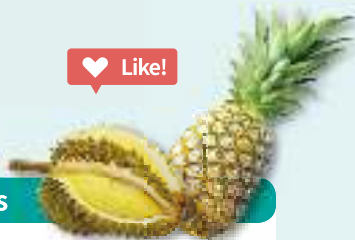


Chinese Sauce and Ingredients

You can buy the usual parts of chicken and duck generally used in Chinese food as well as some hard-to-find sauces.



♥ Like!



Fruits

Fresh fruits grown in Korea as well as other foreign fruits including durian, pineapple, and mango are available in this market.



Nearby Tourist Sites

Daerim Jungang Market



Seoul Traditional Market Tourist Guide



Mullae Art Village

This artistic space formed as artists gradually gathered along the streets that were once filled with old steel works facilities. Artistic works are being created in dozens of art studios along the street on a daily basis. Take advantage of the artistic murals and structures in the background to snap a unique photo. Many studios are closed on weekends. If you want to look at the interesting paintings decorating the shutters, plan for a weekend visit.

- 📍 400 m from Exit 7 of Mullae Station at Subway Line 2, 5-minute walk
- 🚌 Take 5618 bus at Exit 12 of Daerim Station → Get off at Nambu District Court Registration Office, Guro Tax Office (Ace High-Tech City) stop (10 minutes)
- 📍 13-6, Dorim-ro 128ga-gil, Yeongdeungpo-gu, Seoul



Yeongdeungpo Park

This park was built on the site of the first OB Beer factory, one of the major breweries in Korea. The park's landmark in the center is the large pot once used by OB beer factory. The park has other facilities including a circular plaza, a culture garden, a fountain, children's forest center, and a grass square. Each season is unique thanks to the different flowers which bloom and wither. The water park for children opens for free during the summer.

- 📍 200 m from Exit 1 of Yeongdeungpo Station at Subway Line 1, 3-minute walk
- 🚌 Take 5618 bus from Exit 12 of Daerim Station → Get off at Yeongdeungpo Station (20 minutes) → 10-minute walk
- 📍 275, Singil-ro, Yeongdeungpo-gu, Seoul ☎ 82-2-2760-3716



Seoul Traditional Market

Tourist Guide



Section 4 North

- 01. Gangbuk-gu | Suyu Market 66
- 02. Nowon-gu | Gongneung-dong Dokkaebi Market 69
- 03. Dobong-gu | Banghak-dong Dokkaebi Market 72
- 04. Seongbuk-gu | Donam Market 76
- 05. Eunpyeong-gu | Yeonso Market 79

Suyu Market



#LargestmarketinGangbukgu
#Buildingmarket
#Smalllibrary

- GPS 37.630865, 127.023172
- 500 m from Exit 8 of Mia Station at Subway Line 4, 7-minute walk
- 10:00-21:00 Hours vary for each shop.
- 2, Dobong-ro 71-gil, Gangbuk-gu
- 82-2-989-4730
- www.suyumarket.com



This traditional market has existed for over 50 years since 1966. This large market consists of the Building Suyu Market, Street Suyu Market, and Suyu Traditional Market, which house 300 shops inside. Shops in the Suyu Market sell a variety of products including clothing for men, women, and children, miscellaneous goods, and electronic products. Shops also sell fresh agricultural, fishery, and dairy products as well as side dishes and processed goods delivered from all regions across Korea. Many locals visit the market since there are so many shops that sell various goods. A small library is also available for the merchants and visitors.



Must-try Food



Jeon (Korean pancake)

Located within the market, Jeon alley is filled with shops that sell perfectly shaped delicious jeon. The demand for this dish soars during holiday seasons and placing an order in advance is a must.



Like!



Sundae Gukbap

Various parts of pork and sundae (Korean blood sausage) fill the hot pot to the top. Many people visit Suyu Market just to eat its Sundae Gukbap and savory soup.



Shopping Items

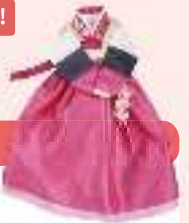


Clothing

The market is well-known for its clothing alley which is filled with clothing stores which offer various styles at affordable prices.



Like!



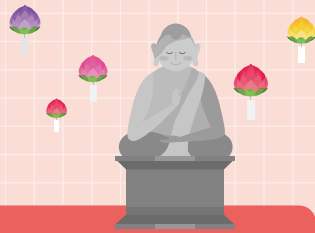
Hanbok

Hanbok for men, women and children are available ready made. You can also choose the textile and color of your hanbok to make your very special hanbok. Rental is also an option.



Nearby Tourist Sites

Suyu Market



Hwagyesa Temple

Located not far away from the busy city, this temple allows you to enjoy the tranquility and quiet atmosphere as you walk in the forest and valley. Originally the place was called Bodeokam when it was first established by King Gwangjong of the Goryeo Kingdom. However, Shinwol Seonsa renamed it Hwagyesa when he relocated the temple during the reign of King Jungjong of the Joseon Dynasty. This is the hub of the Buddhist mission where foreign learners come to train and learn about Korean Buddhism. You can either choose between a temple stay focusing on the Buddhist experience or one that focuses more on relaxation.

- 🚌 Take Gangbuk02 bus at Exit 3 of Suyu Station at Subway Line 4. Then get off at Hanshin University Graduate School of Theology, Hwagyesa Temple stop
- 📍 Take 151 bus at Suyu Market.Sungshin Women's University Mia Campus stop → Get off at Hwagyesa Temple.Hanshin University Graduate School of Theology stop (10 minutes) → 10-minute walk
- 📍 117, Hwagyesa-gil, Gangbuk-gu, Seoul 📞 82-2-902-2663 🌐 www.hwagyesa.org



Dream Forest

This forest is encircled by six districts of Seoul including Gangbuk-gu. It is the fourth largest park in Seoul. The park is known for its thick forest, lake, huge grass square, Wolgwang Falls, trail path, Changpown, and playground for children. The fountain square and water park are open in the summer. You can get a full view of the city of Seoul from the observatory.

- 🚶 Exit 1 of Mia Sageori Station at Subway Line 4
- 📍 Take Gangbuk11 bust at Samsunghwajae Gangbuk Branch → Get off at Ggumdongsan Gas Station (20 minutes)
- 📍 173, Wolgye-ro, Gangbuk-gu, Seoul 📞 82-2-2289-4001
- 🌐 <http://parks.seoul.go.kr/template/sub/dreamforest.do>



+ Section 4

West 17. Nowon-gu

Gongneung-dong Dokkaebi Market

#Dokkaebimural
#Kimjangmarket
#Gyeongchunlineforestpark

- 📍 GPS 37.622246, 127.074845 🚶 360 m from Exit 2 of Gongneung Station at Subway Line 7, 5-minute walk
- 🕒 9:00-21:00 Hours vary for each shop. 📍 Gongneung Business Complex 37, Dongil-ro 180-gil, Nowon-gu, Seoul
- 📞 82-2-976-4143



This is the largest traditional market in Nowon-gu. The market was named Dokkaebi market since you can find everything here just like the Dokkaebi bangmangi (The Goblin's Club) from Korean folk tales. In fact, more than 120 shops spread across the market sell all types of foods and ingredients. You can conveniently find the shop you want by looking at the detailed map found at the entrance of the market. The gimjang or winter kimchi the Dokkaebi market opens during gimjang season. The place is especially popular at that time since you can get all ingredients for gimjang including bokchoy, radish, and jeotgal at competitive price. Just like its namesake there are comical murals of dokkaebi decorating the walls at the entrance that connects the market and Gyeongchun Line Forest Park. Be sure to take a special photo with dokkaebi murals in the background.



Must-try Food



Son Kalguksu

This savory bowl of noodles will satiate your taste buds with its rich soup and chewy noodles. You can observe the noodle-making process if you stand in front of the transparent booth installed at the entrance of the shop.



♥ Like!

Son Mandu (Handmade Dumplings)

First started as a food truck back in 2003, the place has been providing visitors with the same delicious mandu for over 17 years. There are two options available: beef mandu and kimchi mandu.



Shopping Items



Sondubu (Soft Tofu)

Sondubu sold here is made fresh every day using beans grown in Korea. You can also purchase agar and sesame oil along with the sundubu.



♥ Like!

Plates

Various plates are available ranging from sealed containers, glazed earthenware pots, and frying pans to other kitchenware. Additional discounts may be applied if you purchase in bulk.



Nearby Tourist Sites

Gongneung-dong
Dokkaebi Market



Seoul Traditional Market Tourist Guide



Gyeongchun Line Forest Park

This path was created by remodeling the railroad on which the Gyeongchun Line used to pass. You can indulge the nostalgic sentiment as you look on what's left of the real railroad on the path. People started calling the place Gongtral Park (Gongneung-dong + Central Park) as cafés and restaurants with unique charm gathered around the park one by one. Hwarang Station, one of the few whistle stops still intact in Seoul, and the railroad park hold various events every weekend. Go for a light stroll along the railroad and enjoy the scenery.

🚶 350 m from Exit 2 of Hwarang University Station at Subway Line 6, 5-minute walk 🚶 10-minute walk



Seoul Urban Life Museum

The museum gives you a glimpse of the lives of people who lived in Seoul and the city of Seoul itself between the 1950s to the present. The museum consists of the main building, annex building, and detention area. The Life Hall tells stories of life in Seoul; the Court Experience, and Detention Halls are especially popular. Ompang Playground is an experience center established for children in kindergarten and younger elementary schoolers to allow them to run around and learn about the five senses. The temporary Exhibition Hall located on the 4th floor hosts different exhibitions every season.

🚶 200 m from Exit 4 of Taereung Station at Subway Line 6, 7, 3-minute walk 🚶 10-minute walk

🕒 Tues.-Fri. 9:00-19:00 Sat.-Sun.:Holidays 9:00-18:00 Closed on Mondays

📍 27, Dongil-ro 174-gil, Nowon-gu, Seoul ☎ 82-2-3399-2900

🌐 <http://museum.seoul.go.kr/sulm>



Banghak-dong Dokkaebi Market



#Dokkaebiphotozone
#Ulgeum
#Surprisesale

- GPS 37.665627, 127.035224
- 1.1 km from Exit 1 of Banghak Station at Subway Line 1, 15 minute walk
- 8:00-21:30 Hours vary for each shop.
- 17, Dodang-ro 13ga-gil, Dobong-gu, Seoul
- 82-2-954-1225
- <http://bhdokkaebi.modoo.at>



The market was established back in 1982 as vendors gathered one by one. It is said that a mother and her devoted son used to live where Dokkaebi Market now stands. The mother is said to have recovered from her illness thanks to the dokkaebi who was so touched by the son's devotion. This is how the market got its name. Each shop has a miniature dokkaebi hanging from its sign and there are photo spots with dokkaebi in the background.

The market hosts surprise events and regular discount events. Also, the visitors are offered various give-aways when they participate in events hosted by the Dobong-gu Historic and Cultural Tour Belt and the market. You can also stop by Dokkaebi Room, a space where discarded wood is recycled into something useful.



Banghak-dong Dokkaebi Market Specialty Product Ulgeum



Ulgeum which can easily be found on the market banner and many shops is a specialty product of the Banghak-dong Dokkaebi Market. Ulgeum, a spice belonging to the ginger family, is getting more recognition as a health food thanks to its anti-oxidizing and anti-inflammatory effects as well as its ability to speed up the healing process of scars. It is more widely known as Ganghwang, the main ingredient of curry, to Korean people. The difference is that ganghwang is imported whereas ulgeum is grown in Korea.

Banghak-dong Dokkaebi Market cooperates with farms on Jindo Island that harvest ulgeum in the fall when the curcumin level peaks to get direct supply of premium ulgeum. The market has also established the Ulgeum Health Promotion Cooperative Union to produce ulgeum powder, ulgeum tablets, and ulgeum soap. You can purchase these ulgeum products by visiting the customer service center. Premium health ulgeum shops sell kkwabaegi, mandu, and doughnuts made with ulgeum.



Must-try Food

Hotteok

Hotteok here is less oily compared to ordinary hotteok since it is fried at the high temperature of 190°C. Another perk about hotteok in Banghaktong Dokkaebi market is that the sugar fillings don't drip down easily as they have plenty of nuts holding it together.



♥ Like!

Gimbap

You will see an endless line of people waiting at mealtime every day. Although original gimbap is a delicious option, Ddaengcho gimbap made with spicy cheongyang chili pepper is especially popular.



♥ Like!

Vegetables

Many vendors sell fresh vegetables in the Banghak-dong Dokkaebi Market. A lot of people visit the market to purchase a wide variety of vegetables delivered daily basis at affordable prices.



Gim

The gim sold in the market can be divided into three types depending on the amount of salt used: Unsalted gim, ordinary gim, and salty gim. You can choose whichever one you prefer.



Nearby Tourist Sites

Banghak-dong Dokkaebi Market



Seoul Traditional Market Tourist Guide



Peace Culture Bunker

This old abandoned defense facility had been an eyesore for a long time. Today, it has been redefined into a space of culture creation. It consists of a performance stage, exhibition room, and studio where artists from various sectors come to participate in cultural art projects. Additional events such as art workshops and cultural busking where the artists and citizens can interact are held regularly.

- Exit 1-1 of Dobongsan Station at Subway Line 1, 7
- Take bus 5 at Saemaoul Bank → Get off at Dobongsan Station (20 minutes)
- Tues.-Sun. 10:00-18:00 Closed on Mondays
- 932, Madeul-ro, Dobong-gu, Seoul 82-2-3494-1970
- <http://culturebunker.or.kr/>



Seoul Changpwon

This is a unique arboretum where you can enjoy the full view of more than 130 different kinds of iris including yellow iris and iris setosa. There are 12 different theme spaces ranging from pine tree colony, silver glass garden, and iris garden. In marsh garden, various aquatic plants and marsh organisms can be observed from the deck installed around the garden. There is a vast grass garden available as well. This is also the starting point of Seoul Dulle-gil course 1.



- Exit 2 of Dobongsan Station at Subway Line 1, 7
- Take 5 bus at Saemaoul Bank stop → Get off at Dobongsan Station (20 minutes)
- 5:00 ~ 22:00
- 916, Madeul-ro, Dobong-gu, Seoul
- 82-2-954-0031 <http://parks.seoul.go.kr/template/sub/irisgarden.do>

Dooly Museum

Inspired by 'Baby Dinosaur Dooly', a classic animation series beloved by all Koreans, this museum holds exhibition and other hands-on facilities. There is a playground where children can run around freely, a karaoke where visitors can sing the theme song of Dooly, a photo zone, and a gaming facility. There is also a 3D theater.



- Exit 4 of Ssangmun Station at Subway Line 4, 13-minute walk
- Take 1128 bus at Banghak-dong Dokkaebi Market → Get off at Dooly Museum.Daewoo Ian Kukdong Apartment stop (10 minute)
- Tues.-Sun. 10:00-18:00 Closed on Mondays Entrance fees are 4,000 Won on weekdays and 5,000 Won on Weekends and Holidays
- 6, Sirubong-ro 1-gil, Dobong-gu, Seoul 82-2-990-2200 www.doolymuseum.or.kr

Donam Market

#Seonnyeomuk
#Samsunnyeofestival
#Originalgamjatang

- GPS 37.591806, 127.016547
- Exit 3 Sungshin Women's University Station at Subway Line 4
- 8:00-21:00 Hours vary for each shop. Many shops are closed on the first and third Sunday of the month.
- 18, Dongsomun-ro 18-gil, Seongbuk-gu, Seoul
- 82-2-926-5133



This traditional market which started forming back in 1952 sells agricultural goods, daily products, clothing, and other miscellaneous goods. After being recognized as the first traditional market in Seongbuk-gu back in 2005, the market has undergone a series of modernization processes to become a clean and convenient market. The legend of Samseonnyeo who descended from heaven is widely known across the Hyehwa, Samseon, and Donam-dong areas where Donam Market is located. Every year the Donam Market hosts the Samseonnyeo Festival where performances and events are held. Another fun thing about the market is that the foods sold here have the name 'seonnyeo', meaning fairy in Korean, attached in front of them such as seonnyeo jokbal, seonnyeo sundae, and seonnyeo eomuk.



Must-try Food

Like!



Sundae (Korean blood sausage)

For over 20 years, the vendors of the Donam Market have been selling freshly made sundae every day. Adding an ample amount of seonji enriches the flavor even more. You can also buy the set menu by adding gimbab.



Tteok

Although there are many different kinds of tteok, the North Korean style chapssalttteok filled with white adzuki bean paste is the most popular. Handmade songpyeon can be purchased by placing an order in advance.



Shopping Items



Jeotgal (salted seafood)

The vendors sell various kinds of jeotgal procured from Gwangcheon and Sokcho both of which are known for their quality jeotgal. You can sample the different jeotgal and purchase as much as you want.



Kimchi

Each shop makes its own kimchi from scratch. There are various types of kimchi available ranging from bokchoy kimchi, green onion kimchi, and radish kimchi. You can also purchase different kinds of side dishes.



Nearby Tourist Sites

Donam Market



Seoul Jeongneung

This is the tomb of Queen Sindeok who was the beloved queen of King Taejo, the first king of the Joseon Dynasty. Queen Sindeok is widely known for the story in which she presents a bowl of water with willow leaf floating in it when she first meets King Taejo to ensure that he does not gulp it down too quickly. When Queen Sindeok passed away, King Taejo had her buried in a tomb beside the land that had been set aside for his own tomb. However, Jeongneung which was located inside the palace walls was not maintained properly after the coronation of King Taejong following the death of King Taejo. King Taejong who did not like Queen Sindeok ordered that her tomb to be moved to where it is now. King Taejong even removed the stone structure surrounding the Queen's Tomb, and had it used for other purposes. In fact, Jeongneung looks rather simple compared to other royal tombs since it does not have the surrounding and rail stones. Nevertheless, the Jangmyeongdeung or the stone lanterns which are the oldest structures of all the tombs from the Joseon Period are highly regarded for their artistic value. A guided tour by a professional guide is held twice a day. You can sign up for the program. Detailed information about the exact time can be found on the official website.

- Exit 2 of Jeongneung Station at Ui-Sinseol Line, 8-minute walk
- Take Seongbuk22 bus at Donam Market Entrance → Get off at International Cultural Heritage Jeongneung stop (20 minutes) February~May, September~October 6:00~18:00, June~August 6:00~18:30, November~January 6:30~17:30 Closed Mondays
- Entrance fee is 1,000 Won for Koreans between the age of 25~64, 1,000 won for foreigners between the age of 19~64, 500 Won for children between the age of 7~18
- 116, Arirang-ro 19-gil, Seongbuk-gu, Seoul 82-2-914-5133



+ Section 4

West 20, Eunpyeong-gu

Yeonsoe Market

- #Gimbap
- #Bukhansantrail
- #Largestinnorthwesternregion

- GPS 37.619367, 126.921964 Exit 2 Yeonsinnae Station at Subway Line 3, 6
- 8:00~22:00 Hours vary for each shop. 850, Tongil-ro, Eunpyeong-gu, Seoul
- 82-2-355-1272



This is the largest traditional market in the Northwestern region of Seoul. You can purchase agricultural products, seafood, and dairy products as well as clothing and miscellaneous. This market reaches out to Rodeo Street in Yeonsinnae and the main road as well as smaller alleys are filled with shops trading variety of goods. Located in close vicinity to Yeonsinnae Station, the place is filled with a floating population. This is why the market is always filled with lively with vibrant atmosphere from morning to night. Since one of the alleys acts a passing point for hikers who hike Bukhansan Mountain, the alley is always full with hikers during weekends. Hikers often stock up various snacks to eat on the way or fill up their bag with delicious gimbaps before they start heading up. Meokja alley is popular among the hikers as an excellent place to gather after the completion of their hike.



Must-try Food

Gimbap

The gimbap sold here are truly a bargain with a variety of fillings including vegetables, ham, and eomuk wrapped inside freshly cooked rice. It is also perfect for breakfast since it is available from very early in the morning.



Janchi Guksu

This dish is prepared by adding boiled noodles to a clear dried anchovy broth. It is loved by many people since it is a perfect food to fill your belly at a cheap price.



♥ Like!

Shopping Items



Tteokgalbi

A delicious scent wafts through the air when tteokgalbi is being grilled. Handmade tteokgalbi made by adding various vegetables can be a perfect side dish to any meal or serve as a patty if placed between slices of bread.



♥ Like!

Shoes

You can buy different types of shoes including indoor shoes, slippers, sneakers, and rainboots at a reasonable price. The selection for comfortable slippers is especially wide.



Nearby Tourist Sites

Yeonseo Market



Eunpyeong Hanok Village

This is the third hanok village following those located in Seochon and Bukchon. The Eunpyeong Hanok Village was established to suit a modern lifestyle while retaining the original concept of the traditional hanok. Although the majority of the hanok are occupied with actual residents, there are places available such as the Geumam Art Museum and Setiseo Literature Center where you can get first-hand experience with hanok. Information about hanok including its evolution, characteristics, material, and construction process can be found in the Eunpyeong History & Hanok Museum. It is also recommended that you take time to see the eight beautiful sceneries of the Eunpyeong hanok village including Sukyong Shim's Memorial Monument, Jinkwansa Temple, and the zelkova tree in hanok village.



- 🚌 Take 701, 7211 bus at Exit 3 of Yeonsinnae Station at Subway Line 3, 6. Get off at Hanago, Jinkwansa Temple, and Samcheonsa Temple
- 📍 Take 701 bus at Yeonseo Market → Get off at Hanago, Samcheonsa Temple, and Jinkwansa Temple (20 minutes)
- 📍 7-12, Yeonseo-ro 50-gil, Eunpyeong-gu, Seoul
- 🌐 Eunpyeong History & Hanok Museum Official Website <http://museum.ep.go.kr>

Bukhansan National Park

Bukhansan National Park was designated the 15th national park in Korea back in 1983. Due to the variety of trails in the park, it is visited by many hikers throughout the four seasons. It is listed as a Guinness World Record for the most visited national park per unit area. It takes about 2 hours and 40 minutes to walk from the ticket booth of Bukhansanseong to Baekwoondaeh. This route is popular for the beautiful scenery of the main castle gates and valleys. Once you reach Baekwoondaeh (836m), the highest peak of Bukhansan Mountain, you can see a full view of Seoul and the surrounding regions.

- 🚌 Take 34, 704 bus from Exit 2 of Gupabal Station at Subway Line 3. Get off at Bukhansanseong Entrance stop.
- 📍 Take 704 bus at Yeonsinnae.Yeonseo Market → Get off at Bukhansanseong Entrance stop (20 minutes) → 10-minute walk
- 📍 45, Daeseomun-gil, Eunpyeong-gu, Seoul 📞 82-2-909-0497



Seoul Traditional Market

Tourist Guide



Section 5 South

- 01. Gangnam-gu | Yeongdong Traditional Market 84
- 02. Gwanak-gu | Sinwon Market 87
- 03. Dongjak-gu | Namseong "Four Seasons" Market 90
- 04. Seocho-gu | AT Flower Market 93
- 05. Songpa-gu | Jamsil Saemaeul Traditional Market 96

Yeongdong Traditional Market

#Officeworkerschoice
#Onlyoneingangnamgu
#Singlepersonhousehold

- GPS 37.509131, 127.024189
- 350 m from Exit 2 of Nonhyeon Station at Subway Line 7, 5-minute walk
- 9:00-20:00 Hours vary for each shop.
- 35, Hakdong-ro 4-gil, Gangnam-gu, Seoul
- 82-2-512-9111



This is the only traditional market located in the center of Gangnam-gu surrounded by skyscrapers and busy streets. The market started forming back in 1975. You can not only get fresh agricultural, marine, and dairy products but also a variety of products including clothing and processed goods. This market is especially visited by young shoppers in their 20s and 30s since they can get side dishes and ingredients packaged for single-person households.

As its long history suggests, many vendors located in Yeongdong Market have been welcoming customers in the same shop for a long time. This is why people who work nearby like to come here during their breaks and enjoy the bustling atmosphere of traditional markets. Many people come here for lunch as well as for their after-office hours evening gatherings.



Must-try Food

Sundaetguk

The bowl is filled to the brim with pig's head meat, sundae, and rich stock which has been boiled for a long time. Enjoy a completely satisfying meal by adding spicy seasoning.



Shopping Items



Animal Products

There is a wide range of choices from premium quality beef to different parts of pork. You don't even have to wait until you get home since there are some restaurants in which you can cook and eat the meat you have chosen.



Like!

Yetnal Tongdak (Market-style fried chicken)



The entire chicken is fried whole in clean oil. The light batter in which is dipped in becomes a thin crispy layer. You can also try it with various sauces.



Clothing

Since this market is particularly loved by younger people, the clothes sold here tend to be trendier. You can purchase many fashion items including hats, shoes, and accessories at an affordable price.





Yeongdong Traditional Market



Seoul Seolleung and Jeongneung

Seolleung is the tomb of Seongjong, the 9th king of the Joseon Dynasty, and his third wife, Queen Jeonghyeon of the Papyeong Yun clan. Jeongneung is the tomb of Jungjong, the 11th king of the Joseon Dynasty. Following the death of King Seongjong, he was placed in Seolleung in 1494. The place is rather well preserved with everything intact including the burial mound of the king and queen, the ritual space for religious rites, and the entrance for ritual preparation. These tombs that lie harmoniously within a forest of skyscrapers are registered as a UNESCO World Heritage.



- 📍 500 m from Exit 10 of Seolleung Station at Subway Line 2, 7-minute walk
1 km from Exit 3 of Seonjeongneung Station at Subway Line 9, 15-minute walk
- 🚌 Take 6411 bus at Yeongdong Market → Get off at Seolleung Station (10 minutes) → 10-minute walk
- 🕒 March~October 6:00~21:00 / November~January 6:30~17:30 / February 6:00~18:00
- 🎫 Entrance fee is 1,000 Won for Koreans between the age of 25~64, 1,000 won for foreigners between the age of 19~64
- 📞 56, Seolleung-ro 100-gil, Gangnam-gu, Seoul 📠 82-2-568-1291

Korea Cultural House (KOUS)

Smack in the heart of the bustling city, KOUS is a cultural space that helps visitors understand and learn about the beautiful traditional culture of Korea as well as indulge in traditional culture. The facility regularly hosts performances involving instrumental music, vocal music, and dances that embody the spiritual world of Korea as well as other training programs involving traditional crafting. These programs offer foreign visitors a chance to learn and experience the traditional culture of Korea.



- 📍 320 m from Exit 4 of Samseong Station, Subway Line 2, 4-minute walk
- 🚌 Take 360 bus at Nonhyeon Station → Get off at Korea Trade Center.Samseong Station stop (20 minutes)
- 🕒 Hours vary for each program. 📍 12-9, Teheran-ro 92-gil, Gangnam-gu, Seoul (Daechi-dong)
- 📞 82-2-3011-1788 🌐 <https://www.kous.or.kr/main/view>

+ Section 5

South 22. Gwanak-gu

Sinwon Market

- #deliciousandgenerousfilling
- #Yukhoe
- #Tangsuyuk

- 📍 GPS 37.481890, 126.927964 🚶 300 m from Exit 4, Shinrim Station at Subway line 2, 4-minute walk
- 🕒 9:00~22:00 Hours vary for each shop. Closed every second Tuesday of the month
- 📞 40-4, Sinwon-ro 3-gil, Gwanak-gu, Seoul 📠 82-2-854-5453



This is the oldest traditional market in Gwanak-gu. It is always filled with a vibrant atmosphere as many people come and go on a daily basis since it is close to Shinrim Station. Equipped with convenient facilities such as an arcade ceiling, parking lot, and public restrooms, it is always ready to welcome visitors. As it is for most traditional markets, Sinwon Market is popular for selling delicious food at comparatively low prices. One of the reasons why the food is so much cheaper here is because it is located near gosichon, a residential area where many people studying to take the civil service exams live. Although gosichon is gradually disappearing since the bar exam has been discontinued, the vendors who used to offer warm and filling meals for youths tormented by endless nights of studying still remain.



Must-try Food

Yukhoe Bibim Ramyeon

This unique dish prepared by topping yukhoe (Korean style raw beef) over bibim ramyeon has been featured on many TV shows. Thinly sliced yukhoe combines harmoniously with spicy bibim ramyeon in perfect unison.



♥ Like!

Tangsuyuk

You can eat tansuyuk made with Korean pork at a very affordable price. They are fried twice for extra crispiness. Remember to eat freshly fried tangsuyuk right away.



Shopping Items

Medicinal Herbs

You can easily find various medicinal herbs including ginseng, jujube, and kalopanax to use for cooking. You can buy them in small portions if you want and check the origin of the ingredients.



♥ Like!

Fish

A number of vendors are located along the market to trade freshly caught in-season fish. You can either have the fish cut up for sashimi or buy market-made sushi at an affordable price.



Nearby Tourist Sites

Sinwon Market



Seoul Traditional Market Tourist Guide

Nakseongdae Park

This park is located in Nakseongdae which is the birthplace of Gam-chan, the legendary military official of the Goryeo Kingdom. The park was established in order to preserve Nakseongdae and as a memorial to General Gang Gam-chan. The statue of General Gang Gam-chan stands in the center of the park and the vast square surrounding the statue is for local residents to take a moment of rest.

- 📍 12-minute walk from Exit 4 of Nakseongdae Station at Subway Line 2
- 📍 Take 5530 bus at Shinlim Sageori Shinlim Station → Get off at Nakseongdae Entrance (10 minutes) → 10-minute walk
- 📍 77, Nakseongdae-ro, Gwanak-gu, Seoul



Seoul Museum of Art Nam-Seoul

This museum is located in a building built in 1905 as the Belgian Consulate office. This artistic space is a harmonious mixture of traditional architecture and modern art. The exterior as well as the pillars and fireplace located inside reflect the classical style, and exhibitions are freely spread across the building. The artistic value of the building itself is treasured and highlighted during a regular exhibition called <The Former Belgian Consulate Office Transformed into an Art Museum>.

- 📍 Exit 6 of Sadang Station at Subway Line 2
- 📍 Shinlim Station at Subway Line 2 → Exit 6 of Sadang Station (10 minutes) → 5-minute walk
- 🕒 Tues.-Fri. 10:00-20:00 Sat.-Sun.-day before a holiday 10:00-18:00, Closed on Mondays
- 📍 2076, Nambusunhwan-ro, Gwanak-gu, Seoul 📞 82-2-598-6247 🌐 <https://sema.seoul.go.kr>



Namseong “Four Seasons” Market



#Marketwithfourseason
#Angbuttertteok
#Foodstreet

- GPS 37.488059, 126.981710
- Exit 14 of Chongshin University at Subway Line 4
- 9:00-21:00 Hours vary for each shop.
- 47, Dongjak-daero 29-gil, Dongjak-gu, Seoul
- 82-2-536-3002
- www.nssagye.com



This is a traditional market visited by many people. The market is divided into four different sectors, each representing spring, summer, fall, and winter to make it convenient to shop. A logo and character representing the market's identity as a traditional market that trades fresh and quality goods all year round can easily be found as you walk around the market. The spring sector which connects to Exit 14 of Chongshin University Station has shops selling industrial goods, jewelry and articles for marriage. The summer sector consists mainly of fresh vegetables, fruits, fish, side dishes, and almost everything else Namseong “Four Seasons” Market has to offer. As you enter the fall sector, you will find yourself mesmerized by the smells of delicious street foods. The winter sector is lined up with restaurants where you can fill your belly with savory Korean foods including sundat guk and gamja tang.



Must-try Food



Tteok

Delicious tteok are sold in various shapes. Angbuttert tteok (Red bean butter tteok), made by wrapping chewy tteock around a sliver of butter and red bean paste, is especially popular. Don't miss out on the late evening closing sale.



Like!



Jokbal

Korean pig's trotters are braised on site. Spicy fire jokbal exploding with blazing flavor is a popular dish. You can also try ban-ban jokbal which allows you to try two different flavors of jokbal.



Shopping Items



Beef

You can purchase any beef parts in any quantity you need. Since the beef is prepared right in front of you, you can be assured about the quality of the beef you purchase. Options such as bulgogi and gambi are also available.



Grilled Fish

Grilled fish is cooked over charcoal to get the barbecue flavor. The fish is ready to eat since it is cleaned thoroughly for you. Grilled gizzards are also available in the fall.



Nearby Tourist Sites

Namseong "Four Seasons" Market



Seoul National Cemetery

This is where those who sacrificed themselves for the country and its people rest in peace. For 50 years, as part of the mountain preservation policy, the place was off-limits to the general public, but it allowed those who came to pay their respects to do so in a solemn atmosphere. Hyunchung Tower, a tall cross-shaped pillar, was built as a tribute to the souls of the fallen heroes who died protecting their country and its people. The four edges symbolize north, south, east and west, meaning that the tower stands to protect all four directions.

📍 Exit 4, 8 of Dongjak Station at Subway Line 4, 9 📍 Take 350 bus at Chongshin University. Namseong Market → Get off at Dongjak Station. Seoul National Cemetery (10 minutes)

🕒 6:00~18:00 📍 210, Hyeonchung-ro, Dongjak-gu, Seoul
 📞 82-2-748-0114 🌐 www.snmb.mil.kr



Sayuksin Park

This is the place where the souls of 7 loyal vassals who sacrificed their lives for the reinstatement of Danjong, the 6th king of Joseon lies within. The park houses Euijeolsa, Hongsalmun, Bulimun, Yukgakbi, and Sindobi all of which are ancestral shrines. Decorated by more than 33 different trees and flowers across the area of 49,401k㎡, the park blooms with beautiful flowers in spring and becomes filled with refreshing greeneries in summer. The park also houses Sayuksin Historical Museum and the visitors can enjoy the full view of Yeouido and Han River from the observatory. The park is designated as the Seoul Tangible Cultural Heritage No.8.

📍 Exit 1 of Nodeul Station at Subway Line 9, 5-minute walk 📍 Take 350 bus at Chongshin University. Namseong Market → Get off at Nodeul Station (20 minutes) 🕒 9:00~18:00

📍 191, Noryangjin-ro, Dongjak-gu, Seoul 📞 82-2-820-1395



South 24. Seocho-gu

AT Flower Market (Yangjae Flower Market)

#Flowergift
 #Pot
 #Freshflower

- 📍 GPS 37.465706, 127.040261
- 🚶 450 m from Exit 4 of Yangjae Citizen's Forest Station of Shinbundang Line, 6-minute walk
- 🕒 Fresh flower wholesalers (1st, 2nd floor) 00:00~13:00 (closes at 12:00 on official holidays), Closed on Sundays
 Potted Plant Greenhouse, Wreath Sellers 7:00~19:00
- 📍 27, Gangnam-daero, Seocho-gu, Seoul 📞 82-2-579-8100 🌐 <http://yfmc.at.or.kr>



This is the largest flower wholesale market in Korea. It consists of a potted flower greenhouse, wreath sellers, and fresh flower wholesalers. Although most shops are there for large bulk wholesale sales individual customers can buy flowers and pots at retail prices. In the potted greenhouse, you can buy Oriental orchids, western orchids, cacti, and herbs. Wreath shops sell flower bouquets, wreaths, and flower baskets. If you are looking for unpacked fresh flowers and other related products, you can find them from the fresh flower wholesalers. You can check the name and price of the flowers you purchase by asking for a receipt.



Nearby Tourist Sites

AT Flower Market (Yangjae Flower Market)



Yangjae Citizen's Forest



Opened in 1986 in the heart of the city, this forest provides a quiet place to rest. Maeheon-ro street divides the forest into two parts. The northern part has a trail and grassy areas while the southern part has a memorial tower. Many locals visit the forest daily since there is a children's playground and a wide range of fitness equipment available for public use.

- Exit 1 of Yangjae Citizen's Forest Station at Shinbundang Line → Take 140 bus at ATCenter. Yangjae Flower Market → Get off at Yangjae 2-dong Community Service Center. Yangjae Flower Market stop (10 minutes) → 10-minute walk
- 99, Maeheon-ro, Seocho-gu, Seoul
- 82-2-575-3895
- <http://parks.seoul.go.kr/template/sub/citizen.do>

Maeheon Yun Bong-Gil Memorial Hall

This museum was established to commemorate Yun Bong-gil who set off a bomb that killed several Japanese dignitaries in Shanghai on April 29, 1932 and making the world aware of the Koreans determination for independence. His legacy and related photographs are displayed in the hall. Groups of more than five people can reserve a guided tour.



- Exit 1 of Yangjae Citizen's Forest Station at Shinbundang Line → 10-minute walk
- March~October 10:00~18:00 November~February 10:00~17:00 Closed Mondays
- 99, Maeheon-ro, Seocho-gu, Seoul
- 82-2-578-3388
- <http://www.yunbonggil.or.kr>

Seorae Village

Ever since the relocation of the French School of Seoul, the number of French people living in this area increased which eventually led to the creation of a French village. The neighborhood has become a popular dating place with the exotic cafés and restaurants. At the edge of the hill lies Montmartre Park.



- 800 m from Exit 5 of Express Bus Terminal Station at Subway Line 3, 7, 9, 12-minute walk
- Take 405 bus at Yangjae 2-dong Community Service Center. Yangjae Flower Market stop → Get off at Seoul Public Procurement Service Office. Seoul Seongmo Hospital stop (20 minutes) → 20-minute walk
- 126, Banpo-dong, Seocho-gu, Seoul

This fresh flower wholesale market is filled with aromatic scented flowers all year round. Although a variety of flowers is available regardless of the weather since most of them are grown in greenhouses, be sure to check which flowers are in season before purchasing them.



Tulips

Despite being widely known as the symbol of the Netherlands, tulips actually originated from Turkey. This flower is even more beautiful when the petals are closed in an oval shape rather than when they are in full bloom. Although red and yellow tulips are the most common, there are tulips with unique colors including pink and purple. The tulip is said to be a confession of love and everlasting affection.



Roses

Called the queen of flowers, roses are the most popular flower in the world. More than 200 different types of roses are developed annually. Although they start to bloom in May, roses can be grown all year round depending on the species. The meaning of roses varies depending on the color. Red roses signify passionate love; white roses purity, and yellow roses friendship and love.



Chrysanthemums

Chrysanthemums are known to be the flower with the longest history among all the flowers grown in Asia. Although there are chrysanthemums that only grow a single flower per stem, there are others that grow multiple blossoms from a single stem. The red chrysanthemums signify truth; yellow chrysanthemums unrequited love; and white chrysanthemums diligence.



Freesias

The freesia is a perennial plant belonging to the iris family. Although they come mainly in yellow, they also can be found in white and red. It is one of the most popular flowers with its beautiful shape and rich color. The meaning of freesia is naivety.



Jamsil Saemaoul Traditional Market

#Marketnexttobaseballstadium
#Mastersmandu
#Trendyfoods

- GPS 37.509059, 127.085585
- 280 m from Exit 3 of Jamsilsaenae Station at Subway Line 2, 4-minute walk
- 8:00~20:00 Hours vary for each shop.
- 24, Seokchonhosu-ro 12-gil, Songpa-gu, Seoul ☎ 82-2-2203-4949



Despite being a traditional market with 50 years of history, thanks to the renovation project, the market offers a convenient modern shopping experience. There are no cars driving by and it is protected by an arcade installed over the market. The vendors sell in-season vegetables, fruits, and other fresh agricultural and marine products as well as popular foods that were introduced on several TV shows. Another perk about this market is that it sells trendy foods to satiate the needs of younger people who frequent the market. Located near Jamsil Baseball Stadium, the market becomes especially lively when baseball season comes around. The vendors sell various foods suitable for eating in the baseball stadium which include jokbal, chicken, mandu, tteokbokki, and yukhoe. Conveniently located for those who use public transportation, it is within a 4-minute walk from Jamsilsaenae Station.



Must-try Food



Mandu

The rule is to prepare mandu shells and fillings every morning and only sell mandu produced on the same day. The most popular dish is shrimp mandu that has large and plump shrimps inside.



Like!

Fried Squid

Experience the unique texture of fried half-dried squid cooked without any coating. Just the body without the tentacles is served with different sauces.



Shopping Items



Like!



Nuts

You can easily come upon vendors that sell a variety of nuts including savory walnuts, almonds, and peanuts, and you can decide the portions.



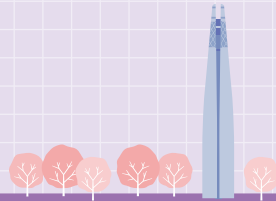
Pet Products

There is a wide range of pet products including dog clothes of all sizes and toys. Pet foods and pet snacks are also available at a discounted price.



Nearby Tourist Sites

Jamsil Saemaoul Traditional Market



Seoul Sky (The 2nd Lotte World)

Located on the top floor of this building is the highest observatory in Korea where you can enjoy a full view of Seoul from 500 m above ground. A Guinness World Record, sky shuttle technology takes you from the basement floor to the 118th floor in one minute flat. The Sky Deck, the main observatory located on the 118th floor, is also registered as a Guinness World Record for being the highest glass-decked observatory in the world. In addition to the main observatory, there is also the sky secret garden, and sky mapping show.

- 📍 Exit 1,2 of Jamsil Station at Subway Line 2
- 📍 Jamsilsaena Station at Subway Line 2 → Exit 2 of Jamsil Station (10 minutes)
- 🕒 Sun.-Thurs. 11:00-22:00
Fri., Sat., day before holidays 11:00-23:00
- 🎫 Entrance fees are 27,000 Won for Adults (over 13)
4,000 Won for children (36 mo-12 y/o)
- 📍 300, Olympic-ro, Songpa-gu, Seoul
- ☎ 1661-2000
- 🌐 <https://seoulsky.lotteworld.com>



Mongchontoseong Fortress

This 2.4 km long fortress was built in the early years of the Baekjae Kingdom. It is located inside the Olympic Park. Though today it looks like a flatland fortress due to the changed landscape, it was originally built as a mountain fortress stretching down from Namhansan Mountain. The excavation process took place between 1983 to 1988 during which time many earthenwares of the Baekjae Kingdom along with other relics were discovered. The Mongchon History Hall is where you can observe traces of the fortress's history and Baekjae culture. There are displays of some of the discovered relics and the remains of an underground shack from the Baekjae era. Mongchontoseong Fortress was designated the 297th Historic Site.

- 📍 Exit 1 of Mongchontoseong Station at Subway Line 8 📍 Take 4318 bus at Saemaoul Market → Get off at Olympic Highway South Intersection (20 minutes) → 10-minute walk 🕒 5:00-22:00
- 📍 424, Olympic-ro, Songpa-gu, Seoul ☎ 82-2-2147-2001



Come to the **traditional markets of Seoul**
filled with things to eat and see.
Come out for a pleasant adventure!

Shopping Streets



Located along the streets of Hongdae, this shopping street is filled with an open and unique atmosphere. The shops here sell a variety of items including clothing, accessories, and trendy miscellaneous goods. If you've seen it on TV, you are sure to find it here! For fun, drop by a karaoke, escape room café or tarot café. The streets also offer rich backdrop for the stages where busking performances are held and the streets are filled with trick art murals.

- 📍 GPS 37.553834, 126.922264
- 🚏 Exit 9 of Hongdae Station at Subway Line 2, 5-minute walk
- 🕒 11:00~20:00 Hours vary for each shop.
- 📍 Eoulmadang-ro, Mapo-gu, Seoul

Shopping Streets



The streets consist of alleyways connecting the main entrance of Ewha Womans University to Shinchon train station. This area has become a hotspot ever since trendy shops managed by young businessmen started opening up. Alleyways are filled with cafés that sell takeout beverages and small restaurants. As a mecca of fashion, the area is also filled with unique shops that sell everything from clothing, cosmetics, shoe, accessories to hair and nail salons.

- 📍 GPS 37.561654, 126.948011
- 🚏 Exit 1, 2, 3 of Ewha Women's University Station at Subway Line 2, 5-minute walk 3-minute walk from Shinchon Station at Gyeongui-Jungang Station
- 🕒 10:00~22:00 Hours vary for each shop.
- 📍 Changcheon-dong, Seodaemun-gu, Seoul

Underground Shopping Center at Gangnam Station

Located in the center of Gangnam, the shops here sell trendy clothing, accessories, and other daily miscellaneous goods. Since it is connected with the subway station, it is easy to find. Since it is located underground, you can shop here regardless of the weather conditions. The prices are also fairly cheap. There are popular cosmetic brands available here as well, making this a must-go-to-place for foreign visitors. There are shops that sell a variety of foods as well as cafés.

- 📍 GPS 37.497913, 127.027663 🚏 Gangnam Station at Subway Line 2
- 🕒 10:00~22:00 Hours vary for each shop.
- 📍 396, Gangnam-daero, Gangnam-gu, Seoul 📞 82-2-553-1898

Express Bus Terminal Underground Shopping

This is a huge underground shopping complex accessible by getting off at Express Bus Terminal Station of Subway Lines 3, 7, or 9. Although referred to as 'Goteo' for short, the exact name of the place is 'Goto Mall'. Exits 8-1 and 8-2 of the Express Bus Terminal station are directly connected to the Central Plaza and shopping centers are lined up on both sides of the plaza. Shops here sell plates, furniture, flowers, accessories, shoes, blankets, and other miscellaneous goods and clothing. You can find many bargains here. Also, as a shopping mecca where people of all ages gather to shop, the place is known to sell both trendy clothes as well as the more basic styles.

- 📍 GPS 37.506296, 127.005187
- 🚏 Express Bus Terminal Station at Subway line 3, 7, 9 🕒 10:00~22:00 Hours vary for each shop.
- 📍 200, Sinbanpo-ro, Seocho-gu, Seoul 📞 82-2-535-8182





Finding a Traditional Market at a Glance

1 Central

- 12 **Yeongcheon Market _ Seodaemun-gu** #Tteokbokki #Foodforyourheart #Fridaymarket
- 15 **Yongmun Traditional Market _ Yongsan-gu** #CentralSquareRestArea #Hangoversoup #Childrensdayfestival
- 18 **Tongin Market _ Jongno-gu** #Dosirakcafe #Friedtteokbokki #throwbacksnacks
- 22 **Namdaemun Market** #largestinSeoul #childrensclothing #souvenir

2 East

- 28 **Amsa General Market _ Gangdong-gu** #Domearcade #Widehallway #Dakgangjeong
- 31 **Hwayang Jeil Market _ Gwangjin-gu** #Singleportionsidedish #Trendyfood #Foodstreet
- 34 **Seoul Yangnyeong Market** #Largestmedicinalherbalmarket #Herbalmedicinemuseum #Herbmedicineculturefestival
- 38 **Ddukdo Market _ Dongdaemun-gu** #Youthmall #Livefishmarket #Ddukdo youthmarket
- 41 **Urim Market _ Jungnang-gu** #Groceryshoppingcart #Largeparkingspace #Accessory

3 West

- 46 **Songhwa Mural Market _ Gangseo-gu** #Mural #Sidedishbundle #Deliveryservice
- 49 **Namguro Market _ Guro-gu** #Fashiontown #Ojakgyostreet #Gugurestarea
- 52 **Byeolbit (Starlight)Nammun Market _ Geumcheon-gu** #Wednesday #Pricetagsystem #Byeoribread
- 55 **Mangwon Market _ Mapo-gu** #TVshowappearance #CafeM #Dakgangjeong
- 58 **Sinyeong Market _ Yangcheon-gu** #Shoppingbagrental #Couponevent #Widehallway
- 61 **Daerim Jungang Market _ Yeongdeungpo-gu** #LittleChinaTown #Chinesetraditionalfood #Multicultural



4 North

- 66 **Suyu Traditional Market _ Gangbuk-gu** #LargestmarketinGangbukgu #Buildingmarket #Smalllibrary
- 69 **Gongneung-dong Dokkaebi Market _ Nowon-gu** #Dokkaebimural #Kimjangmarket #Gyeongchunlineforestpark
- 72 **Banghak-dong Dokkaebi Market _ Dobong-gu** #Dokkaebiphotozone #Ulgeum #Surprisesale
- 76 **Donam Market _ Seongbuk-gu** #Seonnyeoemok #Samsunnyeofestival #Originalgamjatang
- 79 **Yeonsoe Market _ Eunpyeong-gu** #Gimbap #Bukhansanrail #Largestinnorthwesternregion

5 South

- 84 **Yeongdong Traditional Market _ Gangnam-gu** #Officeworkerschoice #Onlyoneingangnamgu #Singlepersonhousehold
- 87 **Sinwon Market _ Gwanak-gu** #deliciousandgenerousfilling #Yukhoe #Tangsuyuk
- 90 **Namseong "Four Seasons" Market _ Dongjak-gu** #Marketwithfourseason #Angbuttertteok #Foodstreet
- 93 **AT Flower Market (Yangjae Flower Market) _ Seocho-gu** #Flowergift #Pot #Freshflower
- 96 **Jamsil Saemaoul Traditional Market _ Songpa-gu** #Marketnexttobaseballstadium #Mastersmandu #Trendyfoods



※ The copyright of this guide book is owned by the Seoul Tourism Organization (STO). Any unauthorized use of this book and its contents without written permission from the STO is strictly prohibited by law. The contents of this book were updated in September 2020 by the STO through extensive research, but changes could have occurred during the production and printing of this book. The Seoul Tourism Organization does not hold any legal responsibility for any losses, damages, and inconvenience that might arise in relation to this book.

Pictures are from the STO website (www.visitseoul.net) | **Maps are from** Smart Seoul Map (gis.seoul.go.kr)
Date Published December 2020 | **Publisher** Seoul Tourism Organization | **Published by** CEO of Seoul Tourism Organization
Produced by Seoul Tourism Organization | **Designed by** T&I Media Co.,Ltd.

